

Recombinant Human MAB21L2 protein, His-tagged

Cat. No. MAB21L2-333H Lot. No. (See product label)

SPECIFICATION

Product Overview	Recombinant Human MAB21L2 protein(NP_006430)(1-359 aa), fused with His tag, was expressed in E. coli.
Species	Human
Source	E.coli
ProteinLength	1-359 aa
Form	The purified protein was Lyophilized from sterile PBS (58mM Na ₂ HPO ₄ , 17mM NaH ₂ PO ₄ , 68mM NaCl, pH7.). 5 % trehalose and 5 % mannitol are added as protectants before lyophilization.
AA Sequence	MIAAQAKLVYQLNKYYTERCQARKAAIAKTIREVCKVVSVDLKEVEVQEPRFISSLSEI DARYEGLEVISPTFEFVVLYLNQMGVFNFDGSLPGCAVLKLSGDRKRSMMLWVE FITASGYLSARKIRSRFQTLVAQAVDKCSYRDVVKMIADTSEVKLRIRERYVVQITPAF KCTGIWPRSAQWPMPHIPWPGPNRVAEVKAEGFNLLSKECYSLTGKQSSAESDA WVLQFGAENRLLMGGCRNKCLSVLKTLRDRHLELPGQPLNNYHMKTLLLYECEKH PRETDWDESLGDRNLGILLQLISCLQCRRCPHYFLPNLDFQGKPHSALESAAKQT WRLAREILTNPKSLDKL
Purity	90%, by SDS-PAGE with Coomassie Brilliant Blue staining.
Storage	Short-term storage: Store at 2-8°C for (1-2 weeks). Long-term storage: Aliquot and store at -20°C to -80°C for up to 3 months, buffer

 Tel: 1-631-559-9269 1-516-512-3133

 Email: info@creative-biomart.com  Fax: 1-631-938-8127

 45-1 Ramsey Road, Shirley, NY 11967, USA

containing 50% glycerol is recommended for reconstitution. Avoid repeat freeze-thaw cycles.

Reconstitution

Reconstitute at 0.25 g/μl in 200 μl sterile water for short-term storage.
 Reconstitution with 200 μl 50% glycerol solution is recommended for longer term storage.

GENE INFORMATION

Gene Name MAB21L2 mab-21 like 2 [Homo sapiens (human)]

Official Symbol MAB21L2

Synonyms MCOPS14; MCSKS14

Gene ID 10586

mRNA Refseq NM_006439.5

Protein Refseq NP_006430.1

MIM 604357

UniProt ID Q9Y586

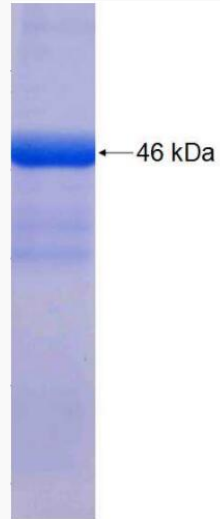
 Tel: 1-631-559-9269 1-516-512-3133

 Email: info@creative-biomart.com  Fax: 1-631-938-8127

 45-1 Ramsey Road, Shirley, NY 11967, USA



SDS-PAGE



Tel: 1-631-559-9269 1-516-512-3133

Email: info@creative-biomart.com Fax: 1-631-938-8127

45-1 Ramsey Road, Shirley, NY 11967, USA