

Recombinant Human MAD1L1 Protein, Myc/DDK-tagged, C13 and N15-labeled

Cat. No. MAD1L1-5448H **Lot. No.** (See product label)

SPECIFICATION

Product Overview	MAD1L1 MS Standard C13 and N15-labeled recombinant protein (NP_001013858) with a C-terminal MYC/DDK tag, was expressed in HEK293 cells.
Species	Human
Source	HEK293
Description	MAD1L1 is a component of the mitotic spindle-assembly checkpoint that prevents the onset of anaphase until all chromosome are properly aligned at the metaphase plate. MAD1L1 functions as a homodimer and interacts with MAD2L1. MAD1L1 may play a role in cell cycle control and tumor suppression. Alternative splicing results in multiple transcript variants.
Molecular Mass	83.1 kDa
AA Sequence	MEDLGENTMVLSTLRSLNNFISQRVEGGSGLDISTSAPGSLQMQYQQSMQLEERAE QIRSKSHLIQVEREKMQMELSHKRARVELERAASTSARNYEREVDRNQELLTRIRQL QEREAGAEKMQEQLERNRQCQQLNDAASKRLREKEDSLAQAGETINALKGRISEL QWSVMDQEMRVKRLSEKQELQEQLDLQHKKCQEANQKIQLQASQEARADHEQ QIKDLEQKLSLQEQDAAIVKNMKSELVRLPRLERELKQLREESAHLREMRETNGLLQ EELEGLQRKLRQEKMQETLVGLELENERLLAKLQSWERLDQTMGLSIRTPEDLSR FVVELQQRELALKDKNSAVTSSARGLEKARQQQLQEELRQVSGQLLEERKKRETHEA LARRLQKRVLTLTKERDGMRAILGSYDSELTPAEYSPQLTRRMREAEDMVQKVHSH

 Tel: 1-631-559-9269 1-516-512-3133

 Email: info@creative-biomart.com  Fax: 1-631-938-8127

 45-1 Ramsey Road, Shirley, NY 11967, USA

SAEMEAQLSQALEELGGQKQRADMLEMELKMLKSQSSSAEQSFLFSREEADTLRLK
 VEELEGRSRLEEEKRMLEAQLERRALQGDYDQSRTKVLHMSLNPTSVARQRLRE
 DHSQLQAECERLRGLLRAMERGGTVPADLEAAAASLPSSKEVAELKKQVESAEELKN
 QRLKEVFQTKIQEFRKACYTLTGYQIDITTENQYRLTSLYAEHPGDCLIFKATSPSGS
 KMQLLETEFSHTVGELIEVHLRRQDSIPAFLSSLTLELFSRQTVATRTRPLEQKLISEE
 DLAANDILDYKDDDDKV

Purity > 80% as determined by SDS-PAGE and Coomassie blue staining

Stability Stable for 3 months from receipt of products under proper storage and handling conditions.

Storage Store at -80 centigrade. Avoid repeated freeze-thaw cycles.

Concentration 50 µg/mL as determined by BCA

Storage Buffer 100 mM glycine, 25 mM Tris-HCl, pH 7.3.

GENE INFORMATION

Gene Name [MAD1L1 mitotic arrest deficient 1 like 1 \[Homo sapiens \(human\) \]](#)

Official Symbol [MAD1L1](#)

Synonyms MAD1L1; MAD1 mitotic arrest deficient-like 1 (yeast); MAD1 (mitotic arrest deficient, yeast, homolog) like 1; mitotic spindle assembly checkpoint protein MAD1; HsMAD1; MAD1; PIG9; TP53I9; TXBP181; MAD1-like protein 1; tax-binding protein 181; tumor protein p53 inducible protein 9; mitotic checkpoint MAD1 protein homolog; mitotic arrest deficient 1-like protein 1; mitotic-arrest deficient 1, yeast, homolog-like 1;

Gene ID [8379](#)

 Tel: 1-631-559-9269 1-516-512-3133

 Email: info@creative-biomart.com  Fax: 1-631-938-8127

 45-1 Ramsey Road, Shirley, NY 11967, USA

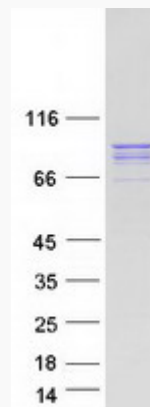
mRNA Refseq [NM_001013836](#)

Protein Refseq [NP_001013858](#)

MIM [602686](#)

UniProt ID [Q9Y6D9](#)

SDS-PAGE



 Tel: 1-631-559-9269 1-516-512-3133

 Email: info@creative-biomart.com  Fax: 1-631-938-8127

 45-1 Ramsey Road, Shirley, NY 11967, USA