

## Recombinant Human MAD2L1 protein, His-tagged

Cat. No. MAD2L1-161H Lot. No. (See product label)

### SPECIFICATION

<b>Product Overview</b>	Recombinant Human MAD2L1 (Met1-Asp205) protein was fused to His-tag at C-terminus and expressed in E.coli.
<b>Species</b>	Human
<b>Source</b>	E.coli
<b>ProteinLength</b>	1-205 a.a.
<b>Description</b>	Mitotic arrest deficient 2-like protein 1 (MAD2L1) is also known as Mitotic spindle assembly checkpoint protein MAD2A (HsMAD2), MAD2. MAD2L1/MAD2 belongs to the MAD2 family. MAD2L1/MAD2 contains one HORMA domain. MAD2L1 is the component of the spindle-assembly checkpoint that prevents the onset of anaphase until all chromosomes are properly aligned at the metaphase plate. MAD2L1/MAD2 is required for the execution of the mitotic checkpoint which monitors the process of kinetochore-spindle attachment and inhibits the activity of the anaphase promoting complex by sequestering CDC20 until all chromosomes are aligned at the metaphase plate.
<b>Predicted N Terminal</b>	Met1
<b>Form</b>	Lyophilized from 0.22 µm filtered solution in PBS, pH7.4, 10% trehalose.
<b>Molecular Mass</b>	The protein has a calculated MW of 24.3 kDa. The protein migrates as 24 kDa under reducing (R) condition (SDS-PAGE).

 Tel: 1-631-559-9269 1-516-512-3133

 Email: [info@creative-biomart.com](mailto:info@creative-biomart.com)  Fax: 1-631-938-8127

 45-1 Ramsey Road, Shirley, NY 11967, USA

<b>Endotoxin</b>	Less than 1.0 EU per µg by the LAL method.
<b>Purity</b>	>95% as determined by SDS-PAGE.
<b>Storage</b>	<p>For long term storage, the product should be stored at lyophilized state at -20 centigrade or lower.</p> <p>Please avoid repeated freeze-thaw cycles.</p> <p>This product is stable after storage at:</p> <p>-20 to -70 centigrade for 12 months in lyophilized state;            -70 centigrade for 3 months under sterile conditions after reconstitution.</p>
<b>Reconstitution</b>	It is recommended that sterile water be added to the vial to prepare a stock solution of 0.2 ug/ul. Centrifuge the vial at 4°C before opening to recover the entire contents.

## GENE INFORMATION

<b>Gene Name</b>	<a href="#">MAD2L1</a>
<b>Official Symbol</b>	<a href="#">MAD2L1</a>
<b>Synonyms</b>	MAD2L1; MAD2 mitotic arrest deficient-like 1 (yeast); MAD2 (mitotic arrest deficient, yeast, homolog) like 1; mitotic spindle assembly checkpoint protein MAD2A; HSMAD2; MAD2; MAD2-like protein 1; mitotic arrest deficient 2-like protein 1; mitotic arrest deficient, yeast, homolog-like 1; MAD2 (mitotic arrest deficient, yeast, homolog)-like 1
<b>Gene ID</b>	<a href="#">4085</a>
<b>mRNA Refseq</b>	<a href="#">NM_002358</a>
<b>Protein Refseq</b>	<a href="#">NP_002349</a>

 Tel: 1-631-559-9269 1-516-512-3133

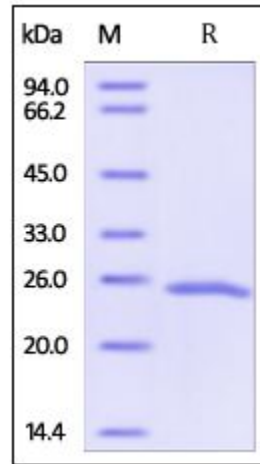
 Email: [info@creative-biomart.com](mailto:info@creative-biomart.com)  Fax: 1-631-938-8127

 45-1 Ramsey Road, Shirley, NY 11967, USA

MIM 601467

UniProt ID Q13257

**SDS-PAGE of  
MAD2L1-161H**



Human MAD2L1, His Tag on SDS-PAGE under reducing (R) condition. The gel was stained overnight with Coomassie Blue. The purity of the protein is greater than 95%.

Tel: 1-631-559-9269 1-516-512-3133

Email: [info@creative-biomart.com](mailto:info@creative-biomart.com) Fax: 1-631-938-8127

45-1 Ramsey Road, Shirley, NY 11967, USA