

# Recombinant Human MAD2L1 Protein, Myc/DDK-tagged, C13 and N15-labeled

**Cat. No.** MAD2L1-6573H    **Lot. No.** (See product label)

## SPECIFICATION

<b>Product Overview</b>	MAD2L1 MS Standard C13 and N15-labeled recombinant protein (NP_002349) with a C-terminal MYC/DDK tag, was expressed in HEK293 cells.
<b>Species</b>	Human
<b>Source</b>	HEK293
<b>Description</b>	MAD2L1 is a component of the mitotic spindle assembly checkpoint that prevents the onset of anaphase until all chromosomes are properly aligned at the metaphase plate. MAD2L1 is related to the MAD2L2 gene located on chromosome 1. A MAD2 pseudogene has been mapped to chromosome 14.
<b>Molecular Mass</b>	23.5 kDa
<b>AA Sequence</b>	MALQLSREQGITLRGSAEIVAEFFSFGINSILYQRGIYPSETFTRVQKYGLTLLVTDDL ELIKYLNNVVEQLKDWLYKCSVQKLVVVISNIESGEVLERWQFDIECDKTAKDDSDAPR EKSQKAIQDEIRSVIRQITATVTFLPLEVSCSFDLLIYTDKDLVVPEKWEESGPQFITN SEEVRLRSFTTTIHKVNSMVAYKIPVNDTRTRPLEQKLISEEDLAANDILDYKDDDDK V
<b>Purity</b>	> 80% as determined by SDS-PAGE and Coomassie blue staining
<b>Stability</b>	Stable for 3 months from receipt of products under proper storage and handling conditions.

 Tel: 1-631-559-9269    1-516-512-3133

 Email: [info@creative-biomart.com](mailto:info@creative-biomart.com)     Fax: 1-631-938-8127

 45-1 Ramsey Road, Shirley, NY 11967, USA

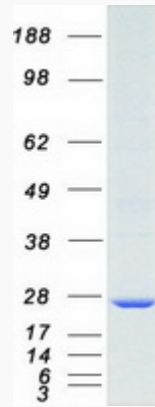
<b>Storage</b>	Store at -80 centigrade. Avoid repeated freeze-thaw cycles.
<b>Concentration</b>	50 µg/mL as determined by BCA
<b>Storage Buffer</b>	100 mM glycine, 25 mM Tris-HCl, pH 7.3.
<b>GENE INFORMATION</b>	
<b>Gene Name</b>	MAD2L1 mitotic arrest deficient 2 like 1 [ Homo sapiens (human) ]
<b>Official Symbol</b>	MAD2L1
<b>Synonyms</b>	MAD2L1; MAD2 mitotic arrest deficient-like 1 (yeast); MAD2 (mitotic arrest deficient, yeast, homolog) like 1; mitotic spindle assembly checkpoint protein MAD2A; HSMAD2; MAD2; MAD2-like protein 1; mitotic arrest deficient 2-like protein 1; mitotic arrest deficient, yeast, homolog-like 1; MAD2 (mitotic arrest deficient, yeast, homolog)-like 1;
<b>Gene ID</b>	4085
<b>mRNA Refseq</b>	NM_002358
<b>Protein Refseq</b>	NP_002349
<b>MIM</b>	601467
<b>UniProt ID</b>	Q13257

 Tel: 1-631-559-9269 1-516-512-3133

 Email: [info@creative-biomart.com](mailto:info@creative-biomart.com)  Fax: 1-631-938-8127

 45-1 Ramsey Road, Shirley, NY 11967, USA

**SDS-PAGE**



 Tel: 1-631-559-9269 1-516-512-3133

 Email: [info@creative-biomart.com](mailto:info@creative-biomart.com)  Fax: 1-631-938-8127

 45-1 Ramsey Road, Shirley, NY 11967, USA