

## Recombinant Human MAD2L1 protein, His-tagged

**Cat. No.** MAD2L1-6599H    **Lot. No.** (See product label)

### SPECIFICATION

<b>Product Overview</b>	Recombinant Human MAD2L1 protein(Q13257)(220aa), fused with N-terminal His tag, was expressed in E. coli.
<b>Species</b>	Human
<b>Source</b>	E.coli
<b>Protein Length</b>	220aa(including fusion tag)
<b>Tag</b>	N-His
<b>Form</b>	20mM Tris.Cl, 300mM NaCl, 0.4M Urea, 50% Glycerol, pH8.0.
<b>Molecular Mass</b>	25.4kDa(including fusion tag)
<b>Storage</b>	Store at -80°C and avoid repeated freeze-thaw cycles.
<b>Reconstitution</b>	It is recommended that sterile water be added to the vial to prepare a stock solution of 0.2 ug/ul. Centrifuge the vial at 4°C before opening to recover the entire contents.

### GENE INFORMATION

<b>Gene Name</b>	MAD2L1 MAD2 mitotic arrest deficient-like 1 (yeast) [ Homo sapiens ]
<b>Official Symbol</b>	MAD2L1

 Tel: 1-631-559-9269    1-516-512-3133

 Email: [info@creative-biomart.com](mailto:info@creative-biomart.com)     Fax: 1-631-938-8127

 45-1 Ramsey Road, Shirley, NY 11967, USA

**Synonyms** MAD2L1; MAD2 mitotic arrest deficient-like 1 (yeast); MAD2 (mitotic arrest deficient, yeast, homolog) like 1; mitotic spindle assembly checkpoint protein MAD2A; HSMAD2; MAD2; MAD2-like protein 1; mitotic arrest deficient 2-like protein 1; mitotic arrest deficient, yeast, homolog-like 1; MAD2 (mitotic arrest deficient, yeast, homolog)-like 1

**Gene ID** [4085](#)

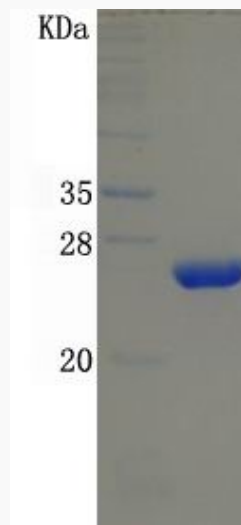
**mRNA Refseq** [NM\\_002358](#)

**Protein Refseq** [NP\\_002349](#)

**MIM** [601467](#)

**UniProt ID** [Q13257](#)

**SDS-PAGE**



 Tel: 1-631-559-9269 1-516-512-3133

 Email: [info@creative-biomart.com](mailto:info@creative-biomart.com)  Fax: 1-631-938-8127

 45-1 Ramsey Road, Shirley, NY 11967, USA