

Recombinant Human MADCAM1 Protein, Myc/DDK-tagged, C13 and N15-labeled

Cat. No. MADCAM1-2884H Lot. No. (See product label)

SPECIFICATION

Product Overview

MADCAM1 MS Standard C13 and N15-labeled recombinant protein (NP_570116) with a C-terminal MYC/DDK tag, was expressed in HEK293 cells.

Species

Human

Source

HEK293

Description

The protein encoded by this gene is an endothelial cell adhesion molecule that interacts preferentially with the leukocyte beta7 integrin LPAM-1 (alpha4beta7), L-selectin, and VLA-4 (alpha4beta1) on myeloid cells to direct leukocytes into mucosal and inflamed tissues. It is a member of the immunoglobulin family and is similar to ICAM1 and VCAM1. At least seven alternatively spliced transcripts encoding different protein isoforms have been found for this gene, but the full-length nature of some variants has not been determined.

Molecular Mass

38.3 kDa

AA Sequence

MDFGLALLLAGLLGLLLGQSLQVKPLQVEPPEPVVAVALGASRQLTCRLACADRGAS
VQWRGLDTSLGAVQSDTGRSVLTVRNASLSAAGTRVCGVSCGGRTFQHTVQLLVY
AFPDQLTVSPAALVPGDPEVACTAHKVTPVDPNALSFSLLVGGQELEGAQALGPEV
QEEEEEPQGDEDVLFVRVTERWRLPPLGTPVPPALYCQATMRLPGLLELSHRQAIPVL
HSPTSPEPPNTTSPEPPNTTSPEPDTTSPEPPDTTSPEPPDKTSPEPAPQQGSTH
TPRSPGSTRTRRPEISQAGPTQGEVIPTGSSKPA GDQLPAALWTSSAVLGLLLLALP

 Tel: 1-631-559-9269 1-516-512-3133

 Email: info@creative-biomart.com  Fax: 1-631-938-8127

 45-1 Ramsey Road, Shirley, NY 11967, USA

TYHLWKRCRHLAEDDTHPPASLRLLPQVSAWAGLRGTGQVGISPSTRTRPLEQKLI
SEEDLAANDILDYKDDDDKV

Purity > 80% as determined by SDS-PAGE and Coomassie blue staining

Stability Stable for 3 months from receipt of products under proper storage and handling conditions.

Storage Store at -80 centigrade. Avoid repeated freeze-thaw cycles.

Concentration 50 µg/mL as determined by BCA

Storage Buffer 100 mM glycine, 25 mM Tris-HCl, pH 7.3.

GENE INFORMATION

Gene Name [MADCAM1 mucosal vascular addressin cell adhesion molecule 1 \[Homo sapiens \(human\) \]](#)

Official Symbol [MADCAM1](#)

Synonyms MADCAM1; mucosal vascular addressin cell adhesion molecule 1; mucosal addressin cell adhesion molecule 1; MACAM1; MAdCAM-1; hMAdCAM-1; mucosal addressin cell adhesion molecule-1;

Gene ID [8174](#)

mRNA Refseq [NM_130760](#)

Protein Refseq [NP_570116](#)

 Tel: 1-631-559-9269 1-516-512-3133

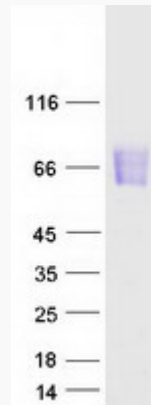
 Email: info@creative-biomart.com  Fax: 1-631-938-8127

 45-1 Ramsey Road, Shirley, NY 11967, USA

MIM 102670

UniProt ID Q13477

SDS-PAGE



 Tel: 1-631-559-9269 1-516-512-3133

 Email: info@creative-biomart.com  Fax: 1-631-938-8127

 45-1 Ramsey Road, Shirley, NY 11967, USA