

## Recombinant Human MADCAM1 protein, His-tagged

Cat. No. MADCAM1-3982H Lot. No. (See product label)

### SPECIFICATION

<b>Product Overview</b>	Recombinant Human MADCAM1 protein(Q13477-1)(Gln19-Gln317), fused with C-terminal His tag, was expressed in HEK293.
<b>Species</b>	Human
<b>Source</b>	HEK293
<b>ProteinLength</b>	Gln19-Gln317
<b>Tag</b>	C-His
<b>Form</b>	Supplied as 0.22µm filtered solution in PBS (pH 7.4).
<b>Bio-activity</b>	Immobilized Human MADCAM1, His Tag at 0.5ug/ml (100ul/Well) on the plate. Dose response curve for Anti-MADCAM1 Antibody, hFc Tag with the EC50 of 3.7ng/ml determined by ELISA.
<b>Molecular Mass</b>	The protein has a predicted MW of 32.5 kDa. Due to glycosylation, the protein migrates to 60-70 kDa based on Tris-Bis PAGE result.
<b>Endotoxin</b>	Less than 1EU per µg by the LAL method.
<b>Purity</b>	> 95% as determined by Tris-Bis PAGE;> 95% as determined by HPLC
<b>Storage</b>	Valid for 12 months from date of receipt when stored at -80°C. Recommend to aliquot

 Tel: 1-631-559-9269 1-516-512-3133

 Email: [info@creative-biomart.com](mailto:info@creative-biomart.com)  Fax: 1-631-938-8127

 45-1 Ramsey Road, Shirley, NY 11967, USA

the protein into smaller quantities for optimal storage. Please do not repeated freeze-thaw cycles.

**Reconstitution**

It is recommended that sterile water be added to the vial to prepare a stock solution of 0.2 ug/ul. Centrifuge the vial at 4°C before opening to recover the entire contents.

## GENE INFORMATION

**Gene Name** [MADCAM1 mucosal vascular addressin cell adhesion molecule 1 \[ Homo sapiens \]](#)

**Official Symbol** [MADCAM1](#)

**Synonyms** MADCAM1; mucosal vascular addressin cell adhesion molecule 1; mucosal addressin cell adhesion molecule 1; MACAM1; MAdCAM-1; hMAdCAM-1; mucosal addressin cell adhesion molecule-1;

**Gene ID** [8174](#)

**mRNA Refseq** [NM\\_130760](#)

**Protein Refseq** [NP\\_570116](#)

**MIM** [102670](#)

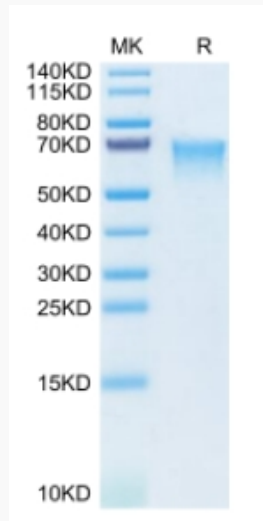
**UniProt ID** [Q13477](#)

 Tel: 1-631-559-9269 1-516-512-3133

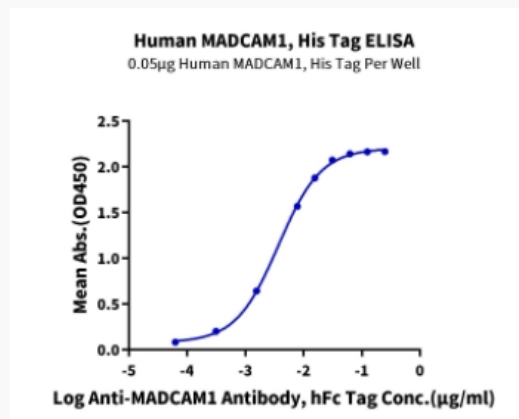
 Email: [info@creative-biomart.com](mailto:info@creative-biomart.com)  Fax: 1-631-938-8127

 45-1 Ramsey Road, Shirley, NY 11967, USA

**Tris-Bis PAGE**



**ELISA Data**



 Tel: 1-631-559-9269 1-516-512-3133

 Email: [info@creative-biomart.com](mailto:info@creative-biomart.com)  Fax: 1-631-938-8127

 45-1 Ramsey Road, Shirley, NY 11967, USA