

Recombinant Human MADCAM1 Protein, Fc-tagged

Cat. No. MADCAM1-3983H Lot. No. (See product label)

SPECIFICATION

Product Overview Recombinant Human MADCAM1 Protein with a Fc-tag was expressed in HEK293.

Species Human

Source HEK293

Description The protein encoded by this gene is an endothelial cell adhesion molecule that interacts preferentially with the leukocyte beta7 integrin LPAM-1 (alpha4beta7), L-selectin, and VLA-4 (alpha4beta1) on myeloid cells to direct leukocytes into mucosal and inflamed tissues. It is a member of the immunoglobulin family and is similar to ICAM1 and VCAM1. At least seven alternatively spliced transcripts encoding different protein isoforms have been found for this gene, but the full-length nature of some variants has not been determined.

Molecular Mass The protein has a calculated MW of 58 kDa.

AA Sequence

```

QSLQVKPLQVEPPEPVVAVALGASRQLTCRLACADRGASVQWRGLDTS LGAVQSD
TGRSVLTVRNASLSAAGTRVCVGSCGGRTFQHTVQLLVYAFPDQLTVSPAALVPGD
PEVACTAHKVTPVDPNALSFSLLVGGQELEGAQALGPEVQEEEEEPQGDEDVLFVRV
TERWRLPPLGTPVPPALYCQATMRLPGLLELSHRQAIPVLHSPTSPEPPDTTSPESPD
TTSPESPDTTSQEPPDTTSPPEPKTSPEPAPQQGSTHTPRSPGSTRTRRPEISQA
GPTQGEVIPTGSSKPAGDQGGGGSGGGGSGGGGSEPKSSDKHTCPCPAPELL
GGPSVFLFPPKPKDTLMISRTPEVTCVVVDVSHEDPEVKFNWYVDGVEVHNAKTKP
REEQYNSTYRVVSVLTVLHQDWLNGKEYKCKVSNKALPAPIEKTISKAKGQPREPQ
    
```

 Tel: 1-631-559-9269 1-516-512-3133

 Email: info@creative-biomart.com  Fax: 1-631-938-8127

 45-1 Ramsey Road, Shirley, NY 11967, USA



VYTLPPSRDELTKNQVSLTCLVKGFYPSDIAVEWESNGQPENNYKTTTPVLDSDGS
FFLYSKLTVDKSRWQQGNVFSCSVMHEALHNHYTQKSLSLSPGK

Purity >90% by SDS-PAGE

Storage Store it under sterile conditions at -20 to -80 centigrade. It is recommended that the protein be aliquoted for optimal storage. Avoid repeated freeze-thaw cycles.

Concentration 0.92 mg/mL

Storage Buffer PBS, pH7.4

GENE INFORMATION

Gene Name [MADCAM1 mucosal vascular addressin cell adhesion molecule 1 \[Homo sapiens \(human\) \]](#)

Official Symbol [MADCAM1](#)

Synonyms MADCAM1; mucosal vascular addressin cell adhesion molecule 1; MACAM1; mucosal addressin cell adhesion molecule 1; MAdCAM-1; hMAdCAM-1

Gene ID [8174](#)

mRNA Refseq [NM_130760](#)

Protein Refseq [NP_570116](#)

MIM [102670](#)

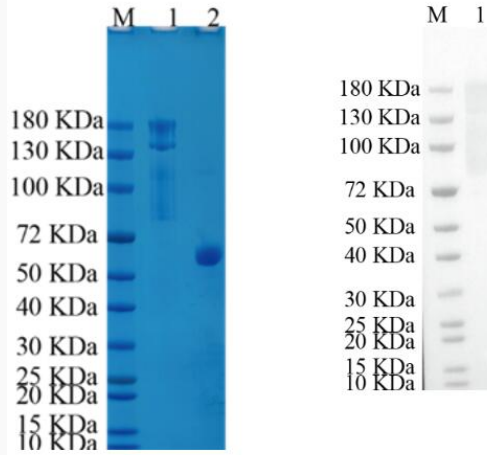
UniProt ID [Q13477](#)

Tel: 1-631-559-9269 1-516-512-3133

Email: info@creative-biomart.com Fax: 1-631-938-8127

45-1 Ramsey Road, Shirley, NY 11967, USA

**Reducing 12% SDS-
PAGE and WB
analysis profiles of
purified MADCAM1
(CBB stained)**



 Tel: 1-631-559-9269 1-516-512-3133

 Email: info@creative-biomart.com  Fax: 1-631-938-8127

 45-1 Ramsey Road, Shirley, NY 11967, USA