

Recombinant Human MAG protein, hFc-tagged

Cat. No. MAG-0507H Lot. No. (See product label)

SPECIFICATION

| | |
|-------------------------|---|
| Product Overview | Recombinant Human MAG protein(P20916)(Gly20-Pro516), fused with C-terminal hFc tag, was expressed in HEK293. |
| Species | Human |
| Source | HEK293 |
| ProteinLength | Gly20-Pro516 |
| Tag | C-hFc |
| Form | Lyophilized from 0.22µm filtered solution in PBS (pH 7.4). Normally 5% trehalose is added as protectant before lyophilization. |
| Bio-activity | Immobilized Human Siglec-4a, hFc Tag at 1µg/ml (100µl/well) on the plate. Dose response curve for Biotinylated Anti-Siglec-4a Antibody, hFc Tag with the EC50 of 18.0ng/ml determined by ELISA. |
| Molecular Mass | The protein has a predicted MW of 81.4 kDa. Due to glycosylation, the protein migrates to 100-115 kDa based on Tris-Bis PAGE result. |
| Endotoxin | Less than 1EU per µg by the LAL method. |
| Purity | > 95% as determined by Tris-Bis PAGE; > 95% as determined by HPLC |

 Tel: 1-631-559-9269 1-516-512-3133

 Email: info@creative-biomart.com  Fax: 1-631-938-8127

 45-1 Ramsey Road, Shirley, NY 11967, USA

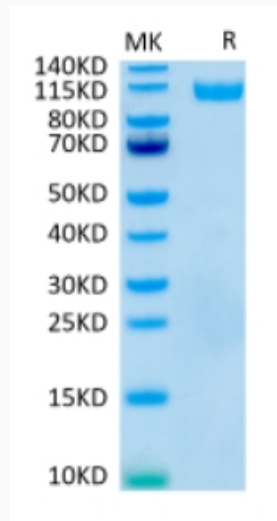
| | |
|-------------------------|--|
| Storage | Reconstituted protein stable at -80°C for 12 months, 4°C for 1 week. Use a manual defrost freezer and avoid repeated freeze-thaw cycles. |
| Reconstitution | Centrifuge tubes before opening. Reconstituting to a concentration more than 100 µg/ml is recommended. Dissolve the lyophilized protein in distilled water. |
| GENE INFORMATION | |
| Gene Name | MAG myelin associated glycoprotein [Homo sapiens] |
| Official Symbol | MAG |
| Synonyms | MAG; myelin associated glycoprotein; GMA; myelin-associated glycoprotein; S MAG; sialic acid binding Ig like lectin 4A; SIGLEC 4A; SIGLEC4A; sialic acid binding Ig-like lectin 4A; sialic acid-binding immunoglobulin-like lectin 4A; S-MAG; SIGLEC-4A; |
| Gene ID | 4099 |
| mRNA Refseq | NM_001199216 |
| Protein Refseq | NP_001186145 |
| MIM | 159460 |
| UniProt ID | P20916 |

 Tel: 1-631-559-9269 1-516-512-3133

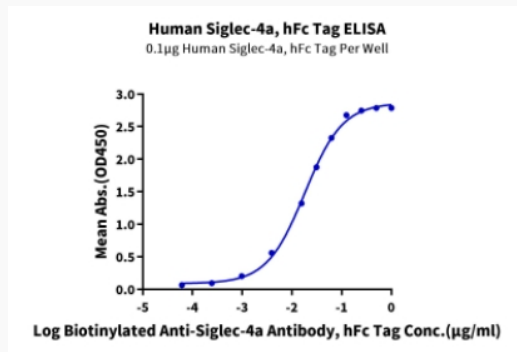
 Email: info@creative-biomart.com  Fax: 1-631-938-8127

 45-1 Ramsey Road, Shirley, NY 11967, USA

Tris-Bis PAGE



ELISA Data



 Tel: 1-631-559-9269 1-516-512-3133

 Email: info@creative-biomart.com  Fax: 1-631-938-8127

 45-1 Ramsey Road, Shirley, NY 11967, USA