

# Recombinant Human myelin associated glycoprotein Protein, His&Flag tagged

Cat. No. MAG-066H Lot. No. (See product label)

## SPECIFICATION

**Product Overview** Recombinant human MAG/Siglec-4a protein (P20916) (Gly 20-Pro 516) with both His, Flag tag at the C-terminus was expressed in HEK293.

**Species** Human

**Source** HEK293

**ProteinLength** 20-516aa

### Description

Adhesion molecule that mediates interactions between myelinating cells and neurons by binding to neuronal sialic acid-containing gangliosides and to the glycoproteins RTN4R and RTN4RL2. Not required for initial myelination, but seems to play a role in the maintenance of normal axon myelination. Protects motoneurons against apoptosis, also after injury; protection against apoptosis is probably mediated via interaction with neuronal RTN4R and RTN4RL2. Required to prevent degeneration of myelinated axons in adults; this probably depends on binding to gangliosides on the axon cell membrane. Negative regulator of neurite outgrowth; in dorsal root ganglion neurons the inhibition is mediated primarily via binding to neuronal RTN4R or RTN4RL2 and to a lesser degree via binding to neuronal gangliosides. In cerebellar granule cells the inhibition is mediated primarily via binding to neuronal gangliosides. In sensory neurons, inhibition of neurite extension depends only partially on RTN4R, RTN4RL2 and gangliosides. Inhibits axon longitudinal growth.

 Tel: 1-631-559-9269 1-516-512-3133

 Email: [info@creative-biomart.com](mailto:info@creative-biomart.com)  Fax: 1-631-938-8127

 45-1 Ramsey Road, Shirley, NY 11967, USA

<b>Tag</b>	C-His&Flag
<b>Molecular Mass</b>	57.4 kDa
<b>Endotoxin</b>	Less than 1.0 EU/μg by the LAL method.
<b>Purity</b>	>95% as determined by SDS-PAGE.
<b>Storage</b>	Please avoid repeated freeze-thaw cycles. Samples are stable for up to twelve months from date of receipt at -20 to -80 centigrade. It is recommended that aliquot the reconstituted solution to minimize freeze-thaw cycles.
<b>Storage Buffer</b>	Lyophilized from a 0.2 μm filtered solution of PBS, pH7.4, 5% Trehalose, 5% mannitol.
<b>Reconstitution</b>	Reconstitute at 250 μg/mL in sterile water.
<b>GENE INFORMATION</b>	
<b>Gene Name</b>	MAG myelin associated glycoprotein [ Homo sapiens (human) ]
<b>Official Symbol</b>	MAG
<b>Synonyms</b>	MAG; myelin associated glycoprotein; GMA; myelin-associated glycoprotein; S MAG; sialic acid binding Ig like lectin 4A; SIGLEC 4A; SIGLEC4A; sialic acid binding Ig-like lectin 4A; sialic acid-binding immunoglobulin-like lectin 4A; S-MAG; SIGLEC-4A;
<b>Gene ID</b>	4099
<b>mRNA Refseq</b>	NM_001199216

 Tel: 1-631-559-9269 1-516-512-3133

 Email: [info@creative-biomart.com](mailto:info@creative-biomart.com)  Fax: 1-631-938-8127

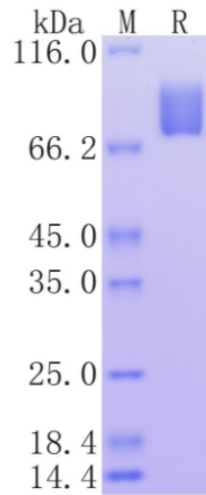
 45-1 Ramsey Road, Shirley, NY 11967, USA

**Protein Refseq** NP\_001186145

**MIM** 159460

**UniProt ID** P20916

**Protein on SDS-PAGE under reducing (R) condition.**



 Tel: 1-631-559-9269 1-516-512-3133

 Email: [info@creative-biomart.com](mailto:info@creative-biomart.com)  Fax: 1-631-938-8127

 45-1 Ramsey Road, Shirley, NY 11967, USA