

Recombinant Human MAG Protein, Myc/DDK-tagged, C13 and N15-labeled

Cat. No. MAG-1067H Lot. No. (See product label)

SPECIFICATION

Product Overview

MAG MS Standard C13 and N15-labeled recombinant protein (NP_002352) with a C-terminal MYC/DDK tag, was expressed in HEK293 cells.

Species

Human

Source

HEK293

Description

The protein encoded by this gene is a type I membrane protein and member of the immunoglobulin superfamily. It is thought to be involved in the process of myelination. It is a lectin that binds to sialylated glycoconjugates and mediates certain myelin-neuron cell-cell interactions. Three alternatively spliced transcripts encoding different isoforms have been described for this gene.

Molecular Mass

69.1 kDa

AA Sequence

MIFLTALPLFWIMISASRGGHWGAWMPSSISAFEGTCVSIPCRFDFFDELRPVVHG
 VWYFNSPYPKNYPPVVFKSRTQVVHESFQGRSRLGDLGLRNCTLLLSNVSPELGG
 KYFRGDLGGYNQYTFSEHSVLDIVNTPNIVPPEVVAGTEVEVSCMVPDNCPELRP
 ELSWLGHEGLGEPAVLGRLEDEGTWVQVSLHVFPTREANGHRLGCQASFPNTT
 LQFEGYASMDVKYPPVIVEMNSSVEAIEGSHVSLGADSNPPPLLTWMRDGTVLR
 EAVAESLLEEEVTPAEDGVYACLAENAYGQDNRTVGLSVMYAPWKPTVNGTMVA
 VEGETVSILCSTQSNPDPILTIFKEKQILSTVIYESELQLELPAVSPEDDGEYWCVAEN
 QYGQRATAFNLSVEFAPVLLLESHCAAARDTVQCLCVVKSNEPSVAFELPSRNV

 Tel: 1-631-559-9269 1-516-512-3133

 Email: info@creative-biomart.com  Fax: 1-631-938-8127

 45-1 Ramsey Road, Shirley, NY 11967, USA

VNESEREFVYSERSGLVLTSLTLRGQAQAPPRVICTARNLYGAKSLELPFQGAHRL
 MWAKIGPVGAVVAFAILIAIVCYITQTRRKKNVTESPSFSAGDNPPVLFSSDFRISGAP
 EKYESERRLGSERRLLGLRGEPPELDLSYSHSDLGKRPTKDSYTLTEELAEYAEIRV
 KTRTRPLEQKLISEEDLAANDILDYKDDDDKV

Purity > 80% as determined by SDS-PAGE and Coomassie blue staining

Stability Stable for 3 months from receipt of products under proper storage and handling conditions.

Storage Store at -80 centigrade. Avoid repeated freeze-thaw cycles.

Concentration 50 µg/mL as determined by BCA

Storage Buffer 100 mM glycine, 25 mM Tris-HCl, pH 7.3.

GENE INFORMATION

Gene Name [MAG myelin associated glycoprotein \[Homo sapiens \(human\) \]](#)

Official Symbol [MAG](#)

Synonyms MAG; myelin associated glycoprotein; GMA; myelin-associated glycoprotein; S MAG; sialic acid binding Ig like lectin 4A; SIGLEC 4A; SIGLEC4A; sialic acid binding Ig-like lectin 4A; sialic acid-binding immunoglobulin-like lectin 4A; S-MAG; SIGLEC-4A;

Gene ID [4099](#)

mRNA Refseq [NM_002361](#)

Protein Refseq [NP_002352](#)

 Tel: 1-631-559-9269 1-516-512-3133

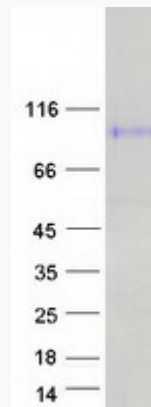
 Email: info@creative-biomart.com  Fax: 1-631-938-8127

 45-1 Ramsey Road, Shirley, NY 11967, USA

MIM 159460

UniProt ID P20916

SDS-PAGE



 Tel: 1-631-559-9269 1-516-512-3133

 Email: info@creative-biomart.com  Fax: 1-631-938-8127

 45-1 Ramsey Road, Shirley, NY 11967, USA