

## Recombinant Human MAG Protein, His-SUMO-tagged

Cat. No. MAG-1270H Lot. No. (See product label)

### SPECIFICATION

<b>Product Overview</b>	Recombinant Human MAG Protein (20-516aa) was expressed in E. coli with N-terminal His-SUMO-tag.
<b>Species</b>	Human
<b>Source</b>	E.coli
<b>ProteinLength</b>	20-516 a.a.
<b>Description</b>	The protein encoded by this gene is a type I membrane protein and member of the immunoglobulin superfamily. It is thought to be involved in the process of myelination. It is a lectin that binds to sialylated glycoconjugates and mediates certain myelin-neuron cell-cell interactions. Three alternatively spliced transcripts encoding different isoforms have been described for this gene.
<b>Form</b>	Tris-based buffer, 50% glycerol.
<b>Molecular Mass</b>	70.7 kDa
<b>AA Sequence</b>	<p>                     GHWGAWMPSSISAFEGTCVSIPCRFDFPDELRPVAVHGVWYFNSPYPKNYPPVVF                      KSRTQVVHESFQGRSRLGDLGLRNCTLLLSNVSPELGGKYYFRGDLGGYNQYTFS                      EHSVLDIVNTPNIVPPEVVAGTEVEVSCMVPDNCPELRPELSWLGHEGLGEPVAVLG                      RLREDEGTWVQVSLLFVPTREANGHRLGQCASFNNTTLQFEGYASMDVKYPPVIV                      EMNSSVEAIEGSHVSLLCGADSNPPPLLTWMRDGTVLREAVAESLLEEEVTPAED                      GVYACLAENAYGQDNRTVGLSVMYAPWKPTVNGTMVAVEGETVSILCSTQSNPDPPI                 </p>

 Tel: 1-631-559-9269 1-516-512-3133

 Email: [info@creative-biomart.com](mailto:info@creative-biomart.com)  Fax: 1-631-938-8127

 45-1 Ramsey Road, Shirley, NY 11967, USA

LTIFKEKQILSTVIYESELQLELPAVSPEDDGEYWCVVAENQYGQRATAFNLSVEFAPV  
 LLLSHCAAARDTVQCLCVVKSNEPEPSVAFELPSRNVTVNESEREFVYSERSGLVLT  
 SILTLRGQAQAPPRVICTARNLYGAKSLELPPFQGAHRLMWAKIGP

**Purity** Greater than 90% as determined by SDS-PAGE.

**Storage** The shelf life of liquid form is 6 months at -20 centigrade/-80 centigrade. The shelf life of lyophilized form is 12 months at -20 centigrade/-80 centigrade.

## GENE INFORMATION

**Gene Name** [MAG myelin associated glycoprotein \[ Homo sapiens \(human\) \]](#)

**Official Symbol** [MAG](#)

**Synonyms** GMA; S-MAG; SPG75; SIGLEC4A; SIGLEC-4A; sialic acid binding Ig-like lectin 4A; sialic acid-binding immunoglobulin-like lectin 4A

**Gene ID** [4099](#)

**mRNA Refseq** [NM\\_002361.3](#)

**Protein Refseq** [NP\\_002352.1](#)

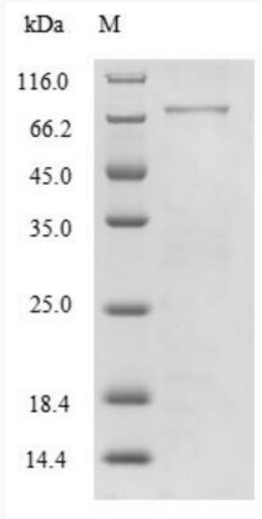
**MIM** [159460](#)

**UniProt ID** [P20916](#)

 Tel: 1-631-559-9269 1-516-512-3133

 Email: [info@creative-biomart.com](mailto:info@creative-biomart.com)  Fax: 1-631-938-8127

 45-1 Ramsey Road, Shirley, NY 11967, USA



Tel: 1-631-559-9269 1-516-512-3133

Email: [info@creative-biomart.com](mailto:info@creative-biomart.com) Fax: 1-631-938-8127

45-1 Ramsey Road, Shirley, NY 11967, USA