

Recombinant Full Length Human MAG Protein, C-Flag-tagged

Cat. No. MAG-1466HFL Lot. No. (See product label)

SPECIFICATION

Product Overview	Recombinant Full Length Human MAG Protein, fused to Flag-tag at C-terminus, was expressed in Mammalian cells.
Species	Human
Source	Mammalian Cells
Description	The protein encoded by this gene is a type I membrane protein and member of the immunoglobulin superfamily. It is thought to be involved in the process of myelination. It is a lectin that binds to sialylated glycoconjugates and mediates certain myelin-neuron cell-cell interactions. Three alternatively spliced transcripts encoding different isoforms have been described for this gene.
Form	25 mM Tris HCl, pH 7.3, 100 mM glycine, 10% glycerol.
Molecular Mass	67.1 kDa
AA Sequence	MIFLTALPLFWIMISASRGGHWGAWMPSSISAFEGTCVSIPCRFDPPDELRPAAVHGVWYFNSPYPKNYP PVVFKSRTQVVHESFQGRSRLGLDLGRNCTLLLSNVSPELGKYYFRGDLGGYNQYTFSEHSVLDIVNT PNIVVPPEVVAGTEVEVSCMVPDNCPELRPELSWLGHEGLGEPAVLGRLREDEGTWWVQVSLLFVPTREA NGHRLGCQASFPNTTLQFEGYASMDVKYPPVIVEMNSSVEAIEGSHVSLLCGADSNPPPLL TWMRDGTVL REAVAESLLLEEVTPAEDGVYACLAENAYGQDNRTVGLSVMYAPWKPTVNGTMVAVEGETVSILCSTQ SNPDPILTIFKEKQILSTVIYESELQLELPAVSPEDDGEYWCVAENQYGQRATAFNLSVEFAPVLLLESH CAAARDTVQCLCVKSNPEPSVAFELPS

 Tel: 1-631-559-9269 1-516-512-3133

 Email: info@creative-biomart.com  Fax: 1-631-938-8127

 45-1 Ramsey Road, Shirley, NY 11967, USA

RNVTVNESEREFVYSERSGLVLTSILTLRGQAQAPPRVICTA RNLYGAKSLELPPFQG
 AHRLMWAKIGPVGAVVAFAILIAIVCYITQTRRKNVTESPSFSAGDNPPVLFSS DFRI
 SGAPEKYESERRLGSERRLLGLRGEPPELDLSYSHSDLGKRPTKDSYTLTEELAEYA
 EIRVKTRTRPLEQKLISEEDLAANDILDYKDDDDKV

Purity > 80% as determined by SDS-PAGE and Coomassie blue staining.

Stability Stable for 12 months from the date of receipt of the product under proper storage and handling conditions. Avoid repeated freeze-thaw cycles.

Storage Store at -80 centigrade.

Concentration >50 ug/mL as determined by microplate BCA method.

Preparation Recombinant protein was captured through anti-DDK affinity column followed by conventional chromatography steps.

Protein Families Druggable Genome, Transmembrane

Protein Pathways Cell adhesion molecules (CAMs)

Full Length Full L.

GENE INFORMATION

Gene Name [MAG myelin associated glycoprotein \[Homo sapiens \(human\) \]](#)

Official Symbol [MAG](#)

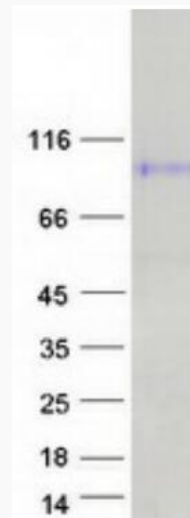
Synonyms GMA; S-MAG; SPG75; SIGLEC4A; SIGLEC-4A

 Tel: 1-631-559-9269 1-516-512-3133

 Email: info@creative-biomart.com  Fax: 1-631-938-8127

 45-1 Ramsey Road, Shirley, NY 11967, USA

Gene ID	4099
mRNA Refseq	NM_002361.4
Protein Refseq	NP_002352.1
MIM	159460
UniProt ID	P20916



Coomassie blue staining of purified MAG protein.

 Tel: 1-631-559-9269 1-516-512-3133

 Email: info@creative-biomart.com  Fax: 1-631-938-8127

 45-1 Ramsey Road, Shirley, NY 11967, USA