

## Recombinant Human MAG protein, His-tagged

Cat. No. MAG-6985H Lot. No. (See product label)

### SPECIFICATION

<b>Product Overview</b>	Recombinant Human MAG protein(P20916)(Gly20-Pro516), fused with C-terminal His tag, was expressed in HEK293.
<b>Species</b>	Human
<b>Source</b>	HEK293
<b>ProteinLength</b>	Gly20-Pro516
<b>Tag</b>	C-His
<b>Form</b>	Supplied as 0.22µm filtered solution in PBS, 100mM L-Arginine (pH 7.4).
<b>Bio-activity</b>	Immobilized Human Siglec-4a, His Tag at 1ug/ml (100ul/well) on the plate. Dose response curve for Anti-Siglec-4a Antibody, hFc Tag with the EC50 of 4.0ng/ml determined by ELISA.
<b>Molecular Mass</b>	The protein has a predicted MW of 55.8 kDa. Due to glycosylation, the protein migrates to 75-82 kDa based on Tris-Bis PAGE result.
<b>Endotoxin</b>	Less than 1EU per µg by the LAL method.
<b>Purity</b>	> 95% as determined by Tris-Bis PAGE;> 95% as determined by HPLC
<b>Storage</b>	Valid for 12 months from date of receipt when stored at -80°C. Recommend to aliquot

 Tel: 1-631-559-9269 1-516-512-3133

 Email: [info@creative-biomart.com](mailto:info@creative-biomart.com)  Fax: 1-631-938-8127

 45-1 Ramsey Road, Shirley, NY 11967, USA

the protein into smaller quantities for optimal storage. Please do not repeated freeze-thaw cycles.

**Reconstitution**

It is recommended that sterile water be added to the vial to prepare a stock solution of 0.2 ug/ul. Centrifuge the vial at 4°C before opening to recover the entire contents.

## GENE INFORMATION

**Gene Name** [MAG myelin associated glycoprotein \[ Homo sapiens \]](#)

**Official Symbol** [MAG](#)

**Synonyms** MAG; myelin associated glycoprotein; GMA; myelin-associated glycoprotein; S MAG; sialic acid binding Ig like lectin 4A; SIGLEC 4A; SIGLEC4A; sialic acid binding Ig-like lectin 4A; sialic acid-binding immunoglobulin-like lectin 4A; S-MAG; SIGLEC-4A;

**Gene ID** [4099](#)

**mRNA Refseq** [NM\\_001199216](#)

**Protein Refseq** [NP\\_001186145](#)

**MIM** [159460](#)

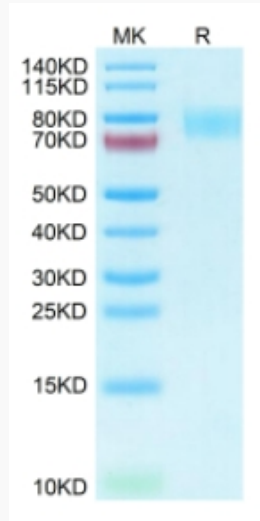
**UniProt ID** [P20916](#)

 Tel: 1-631-559-9269 1-516-512-3133

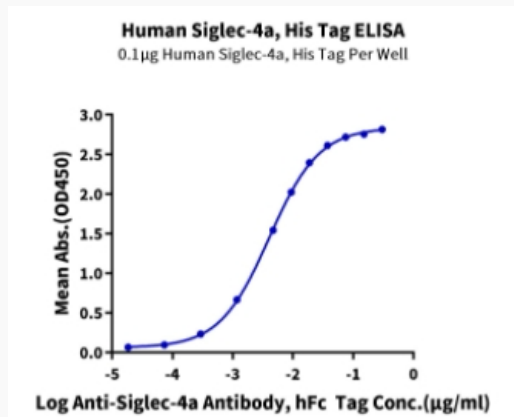
 Email: [info@creative-biomart.com](mailto:info@creative-biomart.com)  Fax: 1-631-938-8127

 45-1 Ramsey Road, Shirley, NY 11967, USA

**Tris-Bis PAGE**



**ELISA Data**



 Tel: 1-631-559-9269 1-516-512-3133

 Email: [info@creative-biomart.com](mailto:info@creative-biomart.com)  Fax: 1-631-938-8127

 45-1 Ramsey Road, Shirley, NY 11967, USA