

## Recombinant Human MAGEC2 protein, His-tagged

Cat. No. MAGEC2-111H Lot. No. (See product label)

### SPECIFICATION

<b>Product Overview</b>	Recombinant Human MAGEC2 protein(111-367 aa), fused with N-terminal His tag, was expressed in E.coli.
<b>Species</b>	Human
<b>Source</b>	E.coli
<b>ProteinLength</b>	111-367 aa
<b>Form</b>	The purified protein was lyophilized from sterile phosphate-buffered saline (PBS: 58 mM Na <sub>2</sub> HPO <sub>4</sub> , 17 mM NaH <sub>2</sub> PO <sub>4</sub> , 68 mM NaCl, pH 7.4). Prior to lyophilization, 5% (w/v) trehalose and 5% (w/v) mannitol were incorporated as cryoprotective excipients. The protein was eluted with a buffer containing 300 mM imidazole.
<b>AASequence</b>	SFSEESSSQKGEDTGTCQGLPDSSESSFTYTLDEKVAELVEFLLLKYEAEPPVTEAEM LMIVIKYKDYFPVILKRAREFMELLFGLALIEVGPDPDFCVFANTVGLTDEGSDDDEGMP ENSLIIILSVIFIKNCASEEVIWEVLNAVGVYAGREHFVYGEPRELLTKVWVQGHYL EYREVPHSSPPYYEFLWGPRAHSESIKKKVLEFLAKLNNTVPSSFPSWYKDALKDVE ERVQATIDTADDATVMASESLSVMSS
<b>Purity</b>	85%, by SDS-PAGE with Coomassie Brilliant Blue staining.
<b>Storage</b>	Store at 2-8°C for 1-2 weeks. Aliquot and store at -20°C to -80°C for up to 3 months, reconstitution with sterile water and addition of an equal volume of glycerol. Avoid repeat freeze-thaw cycles.

 Tel: 1-631-559-9269 1-516-512-3133

 Email: [info@creative-biomart.com](mailto:info@creative-biomart.com)  Fax: 1-631-938-8127

 45-1 Ramsey Road, Shirley, NY 11967, USA

**Reconstitution**

Dissolve the product in 200 µl sterile water to achieve a working concentration of 0.25 g/µl. If experimental compatibility allows, mix the aqueous solution with an equal volume of glycerol (1:1 ratio) after initial reconstitution.

**GENE INFORMATION**
**Gene Name**

MAGEC2 melanoma antigen family C, 2 [ Homo sapiens ]

**Official Symbol**

MAGEC2

**Synonyms**

MAGEC2; melanoma antigen family C, 2; MAGEE1, melanoma antigen, family E, 1, cancer/testis specific; melanoma-associated antigen C2; cancer/testis antigen 10; CT10; MAGE C2; MAGE-C2 antigen; MAGE-E1 antigen; hepatocellular cancer antigen 587; hepatocellular carcinoma-associated antigen 587; melanoma antigen, family E, 1, cancer/testis specific; HCA587; MAGEE1; MGC13377;

**Gene ID**

51438

**mRNA Refseq**

NM\_016249

**Protein Refseq**

NP\_057333

**MIM**

300468

**UniProt ID**

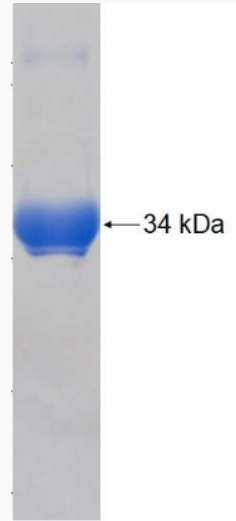
Q9UBF1

 Tel: 1-631-559-9269 1-516-512-3133

 Email: [info@creative-biomart.com](mailto:info@creative-biomart.com)  Fax: 1-631-938-8127

 45-1 Ramsey Road, Shirley, NY 11967, USA

**SDS-PAGE**



 Tel: 1-631-559-9269 1-516-512-3133

 Email: [info@creative-biomart.com](mailto:info@creative-biomart.com)  Fax: 1-631-938-8127

 45-1 Ramsey Road, Shirley, NY 11967, USA