

## Recombinant Human MAGEC2 protein, His&Myc-tagged

Cat. No. MAGEC2-4532H Lot. No. (See product label)

### SPECIFICATION

<b>Product Overview</b>	Recombinant Human MAGEC2 protein(Q9UBF1)(1-373aa), fused with N-terminal His tag and C-terminal Myc tag, was expressed in E.coli.
<b>Species</b>	Human
<b>Source</b>	E.coli
<b>ProteinLength</b>	1-373aa
<b>Form</b>	If the delivery form is liquid, the default storage buffer is Tris/PBS-based buffer, 5%-50% glycerol. If the delivery form is lyophilized powder, the buffer before lyophilization is Tris/PBS-based buffer, 6% Trehalose, pH 8.0.
<b>Molecular Mass</b>	46.2 kDa
<b>Purity</b>	Greater than 90% as determined by SDS-PAGE.
<b>Storage</b>	Store at -20°C/-80°C upon receipt, aliquoting is necessary for mutiple use. Avoid repeated freeze-thaw cycles.
<b>Reconstitution</b>	We recommend that this vial be briefly centrifuged prior to opening to bring the contents to the bottom. Please reconstitute protein in deionized sterile water to a concentration of 0.1-1.0 mg/mL. We recommend to add 5-50% of glycerol (final concentration) and aliquot for long-term storage at -20°C/-80°C.

 Tel: 1-631-559-9269 1-516-512-3133

 Email: [info@creative-biomart.com](mailto:info@creative-biomart.com)  Fax: 1-631-938-8127

 45-1 Ramsey Road, Shirley, NY 11967, USA

**AA Sequence**

MPPVPGVPFRNVNDNSPTSVELEDWVDAQHPTDEEEEEASSASSTLYLVFSPSSFS  
 TSSSLILGGPEEEEEVPSGVIPNLTESIPSSPPQGGPPQGPSQSPLSSCCSSFSWSSFS  
 EESSSQKGEDTGTCQGLPDSESSFTYTLDEKVAELVEFLLLKYEAEPPVTEAEMLMI  
 VIKYKDYFPVILKRAREFMELLFGLALIEVGPDHFCVFANTVGLTDEGSDDEGMPENS  
 LLIILSVIFIKGNCASEEVIWEVLNAVGVYAGREHFVYGEPRELLTKVWVQGHYLEYR  
 EVPHSSPPYYEFLWGPRAHSESIKKKVLFLAKLNNTVPSSFPSWYKDALKDVEERV  
 QATIDTADDATVMASESLSVMSSNVSFSE

## GENE INFORMATION

**Gene Name** [MAGEC2 melanoma antigen family C, 2 \[ Homo sapiens \]](#)

**Official Symbol** [MAGEC2](#)

**Synonyms**

MAGEC2; melanoma antigen family C, 2; MAGEE1, melanoma antigen, family E, 1, cancer/testis specific; melanoma-associated antigen C2; cancer/testis antigen 10; CT10; MAGE C2; MAGE-C2 antigen; MAGE-E1 antigen; hepatocellular cancer antigen 587; hepatocellular carcinoma-associated antigen 587; melanoma antigen, family E, 1, cancer/testis specific; HCA587; MAGEE1; MGC13377;

**Gene ID** [51438](#)

**mRNA Refseq** [NM\\_016249](#)

**Protein Refseq** [NP\\_057333](#)

**MIM** [300468](#)

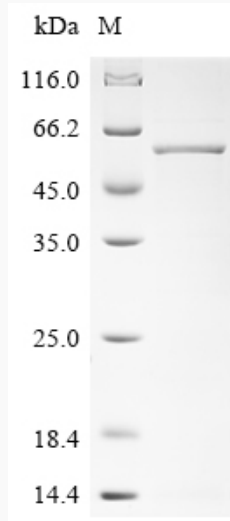
**UniProt ID** [Q9UBF1](#)

 Tel: 1-631-559-9269 1-516-512-3133

 Email: [info@creative-biomart.com](mailto:info@creative-biomart.com)  Fax: 1-631-938-8127

 45-1 Ramsey Road, Shirley, NY 11967, USA

**SDS-PAGE**



 Tel: 1-631-559-9269 1-516-512-3133

 Email: [info@creative-biomart.com](mailto:info@creative-biomart.com)  Fax: 1-631-938-8127

 45-1 Ramsey Road, Shirley, NY 11967, USA