

# Recombinant Full Length Human MAGI2 Protein, C-Flag-tagged

Cat. No. MAGI2-333HFL Lot. No. (See product label)

## SPECIFICATION

<b>Product Overview</b>	Recombinant Full Length Human MAGI2 Protein, fused to Flag-tag at C-terminus, was expressed in Mammalian cells.
<b>Species</b>	Human
<b>Source</b>	Mammalian Cells
<b>Description</b>	The protein encoded by this gene interacts with atrophin-1. Atrophin-1 contains a polyglutamine repeat, expansion of which is responsible for dentatorubral and pallidolusian atrophy. This encoded protein is characterized by two WW domains, a guanylate kinase-like domain, and multiple PDZ domains. It has structural similarity to the membrane-associated guanylate kinase homologue (MAGUK) family.
<b>Form</b>	25 mM Tris HCl, pH 7.3, 100 mM glycine, 10% glycerol.
<b>Molecular Mass</b>	158.6 kDa
<b>AA Sequence</b>	MSKSLKKKSHWTSKVVHESVIGRNPEGQLGFELKGGGAENGQFPYLGEVKPGKVAYE SGSKLVSEELLLEVN ETPVAGLTIRDVLAVIKHCKDPLRLKCVKQGGIVDKDLRHLYN LRFQKGSVDHELQQIIRDNLVLRVPC TTRPHKEGEVPGVDYIFITVEDFMELEKSG ALLESPTYEDNYYGTPKPPAEPAPLLLNVTDQILPGATPS AEGKRKRKNSVSNMEK ASIEPPEEEEEERPVVNGNGVVVTPESSEHEDKSAGASGEMPSQPYPAPVYSQP E ELKEQMDDTKPTKPEDNEEPDPLPDNWEMAYTEKGEVYFIDHNTKTTSWLDPRLAK KAKPPEECKENEL PYGWEKIDDPIYGTYVDHINRRTQFENPVLEAKRKLQQHNP

 Tel: 1-631-559-9269 1-516-512-3133

 Email: [info@creative-biomart.com](mailto:info@creative-biomart.com)  Fax: 1-631-938-8127

 45-1 Ramsey Road, Shirley, NY 11967, USA

HTELGTKPLQAPGFREKPLFTRDASQL KGTFLLSTLLKKSNMGFGFTIIGGDEPDEFL  
 QVKSVIPDGPAAQDGKMETGDVIVYINEVCVLGHTHADVV KLFQSVPIGQSVNLVLC  
 RGYPLPFDPEDPANSMPVPLAIMERPPPVMVNGRHNYETYLEYISRTSQSVPD ITD  
 RPPHSLHSMPTDGQLDGTYPVVHDDNVSMASGATQAELMTLIVKGAQGFQFTI  
 ADSPTGQRVKQ ILDIQGCPLCEGDLIVEINQQNVQNLSHTEVVDILKDCPIGSETSLI  
 IHRGGFFSPWKTPKPIMDRWEN QGSPQTSLSAPAIPQNLFPFPALHRSSFPDSTE  
 FDPKPDYELYEKSRAIYESRQQVPPRTSFRMDSS GPDYKELDVHLRRMESGFG  
 FRILGGDEPGQPILIGAVIAMGSADRDRGLHPGDELVYVDGIPVAGKTHRY VIDLMH  
 HAARNGQVNLTVRRKVLGGEPCEPENGSRPGSVSTHHSSPRSDYATYTNSNHAAP  
 SSSNASPEEG FASHSLQTSVVIHRKENEGFGFVISSLNRPESGSTITVPHKIGRIIDG  
 SPADRCALKLVGDRILAVNG QSIINMPHADIVKLIKDAGLSVTLRIPQEELNSPTSAP  
 SSEKQSPMAQQSPLAQQSPLAQPSPATPNSP IAQPAPPQLQLQGHENSYSRSEVK  
 ARQDVKPDIRQPPFTDYRQPPLDYRQPPGGDYQQPPPLDYRQPPLL DYRQHSPDT  
 RQYPLSDYRQPQDFDYFTVDMEKGAKGFGFSIRGGREYKMDLYVLRRLAEDGPAIRN  
 GRMRV GDQIIEINGESTRDMTHARAIELIKSGRRVRLLLKRGTGQVPEYDEPAPW  
 SSPAAAAPGLPEVGVSLDD GLAPFSPSHPAPPSDPHQISPGPTWDIKREHDVRKP  
 KELSACGQKKQRLGEQRERSASPQRAARPRLEE APGGQGRPEAGRPASEARAPG  
 LAAADAADAARAGGKEAPRAAAGSELCRREGPGAAPAFAGPGGGGGSGAL  
 EAEGRAGARAGPRPGPRPPGGAPARKAAVAPGPWKVPGSDKLPSVLKPGASAAS  
 RTRTRPLEQKLISEEDLAANDILDYKDDDDKV

<b>Purity</b>	> 80% as determined by SDS-PAGE and Coomassie blue staining.
<b>Stability</b>	Stable for 12 months from the date of receipt of the product under proper storage and handling conditions. Avoid repeated freeze-thaw cycles.
<b>Storage</b>	Store at -80 centigrade.
<b>Concentration</b>	>50 ug/mL as determined by microplate BCA method.

 Tel: 1-631-559-9269 1-516-512-3133

 Email: [info@creative-biomart.com](mailto:info@creative-biomart.com)  Fax: 1-631-938-8127

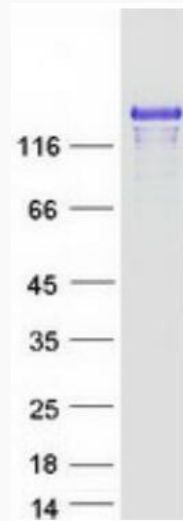
 45-1 Ramsey Road, Shirley, NY 11967, USA

<b>Preparation</b>	Recombinant protein was captured through anti-DDK affinity column followed by conventional chromatography steps.
<b>Protein Families</b>	Druggable Genome
<b>Protein Pathways</b>	Tight junction
<b>Full Length</b>	Full L.
<b>GENE INFORMATION</b>	
<b>Gene Name</b>	MAGI2 membrane associated guanylate kinase, WW and PDZ domain containing 2 [ Homo sapiens (human) ]
<b>Official Symbol</b>	MAGI2
<b>Synonyms</b>	AIP1; AIP-1; ARIP1; SSCAM; MAGI-2; NPHS15; ACVRIP1
<b>Gene ID</b>	9863
<b>mRNA Refseq</b>	NM_012301.4
<b>Protein Refseq</b>	NP_036433.2
<b>MIM</b>	606382
<b>UniProt ID</b>	Q86UL8

 Tel: 1-631-559-9269 1-516-512-3133

 Email: [info@creative-biomart.com](mailto:info@creative-biomart.com)  Fax: 1-631-938-8127

 45-1 Ramsey Road, Shirley, NY 11967, USA



Coomassie blue staining of purified MAGI2 protein.

Tel: 1-631-559-9269 1-516-512-3133

Email: [info@creative-biomart.com](mailto:info@creative-biomart.com) Fax: 1-631-938-8127

45-1 Ramsey Road, Shirley, NY 11967, USA