

# Recombinant Human MAGI2 Protein, Myc/DDK-tagged, C13 and N15-labeled

Cat. No. MAGI2-5578H Lot. No. (See product label)

## SPECIFICATION

<b>Product Overview</b>	MAGI2 MS Standard C13 and N15-labeled recombinant protein (NP_036433) with a C-terminal MYC/DDK tag, was expressed in HEK293 cells.
<b>Species</b>	Human
<b>Source</b>	HEK293
<b>Description</b>	The protein encoded by this gene interacts with atrophin-1. Atrophin-1 contains a polyglutamine repeat, expansion of which is responsible for dentatorubral and pallidolusian atrophy. This encoded protein is characterized by two WW domains, a guanylate kinase-like domain, and multiple PDZ domains. It has structural similarity to the membrane-associated guanylate kinase homologue (MAGUK) family.
<b>Molecular Mass</b>	158.6 kDa
<b>AA Sequence</b>	MSKSLKKKSHWTSKVVHESVIGRNPEGQLGFELKGGGAENGQFPYLGEVKPGKVAYE SGSKLVSEELLLEVNTPVAGLTIRDVLAVIKHCKDPLRLKCVKQGGIVDKDLRHLYN LRFQKGSVDHELQIIRDNLRLRTPCTTRPHKEGEVPGVDYIFITVEDFMELEKSGA LLESGTYEDNYYGTPKPPAEPAPLLLNVTDQILPGATPSAEGKRKRKNSVSNMEKAS IEPPEEEEEERPVVNGNGVVVTPESSEHEDKSAGASGEMPSQPYPAPVYSQPEELK EQMDDTKPTKPEDNEEPDPLPDNWEMAYTEKGEVYFIDHNTKTTSWLDPRLAKKAK PPEECKENELPYGWEKIDDPIYGYVDHINRRTQFENPVLEAKRKLQQHNPHTEL GTKPLQAPGFREKPLFTRDASQLKGTFLSTLLKSNMGFGFTIIGGDEPDEFLQVKS

 Tel: 1-631-559-9269 1-516-512-3133

 Email: [info@creative-biomart.com](mailto:info@creative-biomart.com)  Fax: 1-631-938-8127

 45-1 Ramsey Road, Shirley, NY 11967, USA



VIPDGPAAQDGKMETGDVIVYINEVCVLGHTHADVVKLFQSVPIGQSVNLVLCRGP  
 LPFPDPANSMVPLAIMERPPPVMVNGRHNYETYLEYISRTSQSVPDITDRPPHS  
 LHSMPTDGQLDGTYPVVHDDNVSMASGATQAELMTLIVKGAQGFGTIADSPT  
 GQRVKQILDIQGCPGLCEGLIVEINQQNVQNLSTEVVDILKDCPIGSETSLIHRGG  
 FFSPWKTPKIMDRWENQGSPTLSAPAIPQNLFPFPALHRSSFPDSTEAFDPRK  
 PDPYELYEKSRAIYESRQQVPPRTSFRMDSSGPDYKELDVHLRRMESGFGFRILGG  
 DEPGQPILIGAVIAMGSADRDGRLHPGDELVYVDGIPVAGKTHRYVIDLMHHAARNG  
 QVNLTVRRKVLGCGEPCPENGRSPGSVSTHHSSPRSDYATYTNNSHAAPSSNASP  
 PEGFASHSLQTSADVVIHRKENEGFGFVISSLNRPESGSTITVPHKIGRIIDGSPADRC  
 AKLKVGDRLAVNGQSIINMPHADIVKLIKDAGLSVTLRIIPQEELNSPTSAPSSEKQSP  
 MAQQSPLAQQSPLAQSPATPNSPIAQAPPQPLQLQGHENSYSRSEVKARQDVKP  
 DIRQPPFTDYRQPPLDYRQPPGGDYQQPPPLDYRQPPLLDYRQHSPDTRQYPLSD  
 YRQPQDFDYFTVDMKGAKEGFGFSIRGGREYKMDLYVLRLEADGPAIRNGRMRVG  
 DQIIEINGESTRDMTHARAIELIKSGRRVRLLLKRGTGQVPEYDEPAPWSSPAAAAP  
 GLPEVGVSLDDGLAPFSPSHPAPPSPSHQISPGPTWDIKREHDVRKPKELSACGQ  
 KKQRLGEQRERSASPQRAARPRLEEAPGGQGRPEAGRPASEARAPGLAAADAAD  
 AARAGGKEAPRAAAGSELCRREGPGAAPAFAGPGGGGSGALEAEGRAGARAGPR  
 PGPRPPGGAPARKAAVAPGPWKVPGSDKLPVSKPGASAASRTRTRPLEQKLISEE  
 DLAANDILDYKDDDDKV

<b>Purity</b>	> 80% as determined by SDS-PAGE and Coomassie blue staining
<b>Stability</b>	Stable for 3 months from receipt of products under proper storage and handling conditions.
<b>Storage</b>	Store at -80 centigrade. Avoid repeated freeze-thaw cycles.
<b>Concentration</b>	50 µg/mL as determined by BCA
<b>Storage Buffer</b>	100 mM glycine, 25 mM Tris-HCl, pH 7.3.

Tel: 1-631-559-9269 1-516-512-3133

Email: [info@creative-biomart.com](mailto:info@creative-biomart.com) Fax: 1-631-938-8127

45-1 Ramsey Road, Shirley, NY 11967, USA

## GENE INFORMATION

<b>Gene Name</b>	MAGI2 membrane associated guanylate kinase, WW and PDZ domain containing 2 [ Homo sapiens (human) ]
<b>Official Symbol</b>	MAGI2
<b>Synonyms</b>	MAGI2; membrane associated guanylate kinase, WW and PDZ domain containing 2; membrane-associated guanylate kinase, WW and PDZ domain-containing protein 2; ACVRIP1; AIP1; ARIP1; KIAA0705; MAGI 2; atrophin-1-interacting protein 1; atrophin-1-interacting protein A; activin receptor interacting protein 1; membrane-associated guanylate kinase inverted 2; AIP-1; SSCAM; MAGI-2;
<b>Gene ID</b>	9863
<b>mRNA Refseq</b>	NM_012301
<b>Protein Refseq</b>	NP_036433
<b>MIM</b>	606382
<b>UniProt ID</b>	Q86UL8

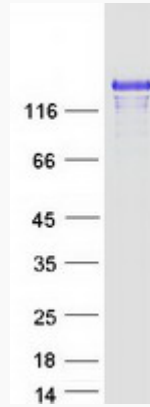
 Tel: 1-631-559-9269 1-516-512-3133

 Email: [info@creative-biomart.com](mailto:info@creative-biomart.com)  Fax: 1-631-938-8127

 45-1 Ramsey Road, Shirley, NY 11967, USA



SDS-PAGE



Tel: 1-631-559-9269 1-516-512-3133

Email: [info@creative-biomart.com](mailto:info@creative-biomart.com) Fax: 1-631-938-8127

45-1 Ramsey Road, Shirley, NY 11967, USA