

## Recombinant Human MAGI2 protein, GST-tagged

Cat. No. MAGI2-6744H Lot. No. (See product label)

### SPECIFICATION

<b>Product Overview</b>	Recombinant Human MAGI2 protein(563-912 aa), fused with N-terminal GST tag, was expressed in E.coli.
<b>Species</b>	Human
<b>Source</b>	E.coli
<b>ProteinLength</b>	563-912 aa
<b>Form</b>	The purified protein was lyophilized from sterile phosphate-buffered saline (PBS: 58 mM Na <sub>2</sub> HPO <sub>4</sub> , 17 mM NaH <sub>2</sub> PO <sub>4</sub> , 68 mM NaCl, pH 8.0). Prior to lyophilization, 5% (w/v) trehalose and 5% (w/v) mannitol were incorporated as cryoprotective excipients. The protein was eluted with a buffer containing 100 mM reduced glutathione (GSH).
<b>AASequence</b>	DRPPHSLHSMPTDGQLDGTYPVHDDNVSMASGATQAEMLTLTIVKGAQGFGF TIADSPTGQRVKQILDIQGCPGLCEGLIVEINQQNVQNLSHTEVVDILKDCPIGSETS LIIHRGGFFSPWKTPKPIMDRWENQGSPQTSLSAPAIPQNLFPFPPALHRSSFDPSTE AFDPRKPDPELYEKSRAIYESRRPDYKELDVHLRRMESGFGFRILGGDEPGQPILI GAVIAMGSADRDGRLHPGDELVYVDGIPVAGKTHRYVIDLMHHAARNGQVNLTVRR KVLGGGEPCENGRSPGSVSTHHSSPRSDYATYTNNSHAAPSSNASPPEGFASHS LQTSDVVIHRK
<b>Purity</b>	85%, by SDS-PAGE with Coomassie Brilliant Blue staining.

 Tel: 1-631-559-9269 1-516-512-3133

 Email: [info@creative-biomart.com](mailto:info@creative-biomart.com)  Fax: 1-631-938-8127

 45-1 Ramsey Road, Shirley, NY 11967, USA

**Storage** Store at 2-8°C for 1-2 weeks. Aliquot and store at -20°C to -80°C for up to 3 months, reconstitution with sterile water and addition of an equal volume of glycerol. Avoid repeat freeze-thaw cycles.

**Reconstitution** Dissolve the product in 200 µl sterile water to achieve a working concentration of 0.25 g/µl. If experimental compatibility allows, mix the aqueous solution with an equal volume of glycerol (1:1 ratio) after initial reconstitution.

## GENE INFORMATION

**Gene Name** [MAGI2 membrane associated guanylate kinase, WW and PDZ domain containing 2 \[ Homo sapiens \]](#)

**Official Symbol** [MAGI2](#)

**Synonyms** MAGI2; membrane associated guanylate kinase, WW and PDZ domain containing 2; membrane-associated guanylate kinase, WW and PDZ domain-containing protein 2; ACVRIP1; AIP1; ARIP1; KIAA0705; MAGI 2; atrophin-1-interacting protein 1; atrophin-1-interacting protein A; activin receptor interacting protein 1; membrane-associated guanylate kinase inverted 2; AIP-1; SSCAM; MAGI-2;

**Gene ID** [9863](#)

**mRNA Refseq** [NM\\_012301](#)

**Protein Refseq** [NP\\_036433](#)

**MIM** [606382](#)

**UniProt ID** [Q86UL8](#)

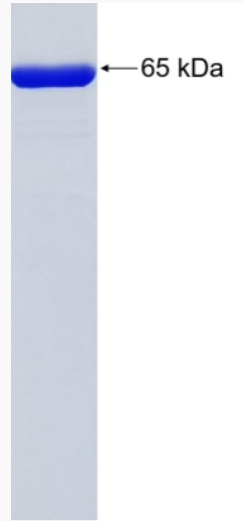
 Tel: 1-631-559-9269 1-516-512-3133

 Email: [info@creative-biomart.com](mailto:info@creative-biomart.com)  Fax: 1-631-938-8127

 45-1 Ramsey Road, Shirley, NY 11967, USA



SDS-PAGE



Tel: 1-631-559-9269 1-516-512-3133

Email: [info@creative-biomart.com](mailto:info@creative-biomart.com) Fax: 1-631-938-8127

45-1 Ramsey Road, Shirley, NY 11967, USA