

## Recombinant Human MAGOHB Protein, GST-tagged

**Cat. No.** MAGOHB-4213H    **Lot. No.** (See product label)

### SPECIFICATION

<b>Product Overview</b>	Human FLJ10292 full-length ORF ( NP_060518.1, 1 a.a. - 148 a.a.) recombinant protein with GST-tag at N-terminal.
<b>Species</b>	Human
<b>Source</b>	Wheat Germ
<b>Description</b>	MAGOHB (Mago Homolog B, Exon Junction Complex Core Component) is a Protein Coding gene. Among its related pathways are mRNA Splicing - Major Pathway and Gene Expression. GO annotations related to this gene include poly(A) RNA binding. An important paralog of this gene is MAGOH.
<b>Molecular Mass</b>	43.7 kDa
<b>AA Sequence</b>	MAVASDFYLRYVVGHKGKFGHEFLEFEFRPDGKLRVANNSNYKNDVMIRKEAYVHK SVMEELKRIIDDSEITKEDDALWPPPDRVGRQELEIVIGDEHISFTTSKIGSLIDVNQSK DPEGLRVFYLLVQDLKCLVFSLIGLHFKIKPI
<b>Applications</b>	Enzyme-linked Immunoabsorbent Assay Western Blot (Recombinant protein) Antibody Production Protein Array
<b>Notes</b>	Best use within three months from the date of receipt of this protein.

 Tel: 1-631-559-9269    1-516-512-3133

 Email: [info@creative-biomart.com](mailto:info@creative-biomart.com)     Fax: 1-631-938-8127

 45-1 Ramsey Road, Shirley, NY 11967, USA

**Storage** Store at -80 centigrade. Aliquot to avoid repeated freezing and thawing.

**Storage Buffer** 50 mM Tris-HCl, 10 mM reduced Glutathione, pH=8.0 in the elution buffer.

## GENE INFORMATION

**Gene Name** MAGOHB mago-nashi homolog B (Drosophila) [ Homo sapiens ]

**Official Symbol** MAGOHB

**Synonyms** MAGOHB; mago-nashi homolog B (Drosophila); protein mago nashi homolog 2; FLJ10292; MGN2; mago-nashi homolog 2; mago; magoh;

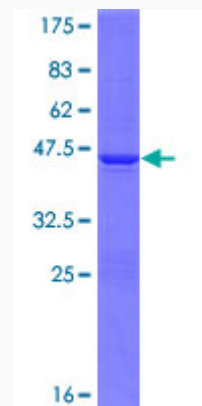
**Gene ID** 55110

**mRNA Refseq** NM\_018048

**Protein Refseq** NP\_060518

**UniProt ID** Q96A72

**Quality Control Testing**



 Tel: 1-631-559-9269 1-516-512-3133

 Email: [info@creative-biomart.com](mailto:info@creative-biomart.com)  Fax: 1-631-938-8127

 45-1 Ramsey Road, Shirley, NY 11967, USA



12.5% SDS-PAGE Stained with Coomassie Blue.

 Tel: 1-631-559-9269 1-516-512-3133

 Email: [info@creative-biomart.com](mailto:info@creative-biomart.com)  Fax: 1-631-938-8127

 45-1 Ramsey Road, Shirley, NY 11967, USA