

Recombinant Human MALT1 Protein, MYC/DDK-tagged, C13 and N15-labeled

Cat. No. MALT1-234H Lot. No. (See product label)

SPECIFICATION

Product Overview	MALT1 MS Standard C13 and N15-labeled recombinant protein (NP_006776) with a C-terminal MYC/DDK tag, was expressed in HEK293 cells.
Species	Human
Source	HEK293
Description	This gene encodes a caspase-like protease that plays a role in BCL10-induced activation of NF-kappaB. The protein is a component of the CARMA1-BCL10-MALT1 (CBM) signalosome that triggers NF-kappaB signaling and lymphocyte activation following antigen-receptor stimulation. Mutations in this gene result in immunodeficiency 12 (IMD12). This gene has been found to be recurrently rearranged in chromosomal translocations with other genes in mucosa-associated lymphoid tissue lymphomas, including a t(11;18)(q21;q21) translocation with the baculoviral IAP repeat-containing protein 3 (also known as apoptosis inhibitor 2) locus [BIRC3(API2)-MALT1], and a t(14;18)(q32;q21) translocation with the immunoglobulin heavy chain locus (IGH-MALT1). Alternatively spliced transcript variants have been described for this gene. [provided by RefSeq, May 2018]
Molecular Mass	92.1 kDa
AA Sequence	MSLLGDPLQALPPSAAPTGPLLAPPAGATLNRLREPLLRLSELLDQAPEGRGWRR LAELAGSRGRLRLSCLDLEQCCLKVLEPEGSPSLCLLKLKMGKEGCTVTELSDFLQAM

 Tel: 1-631-559-9269 1-516-512-3133

 Email: info@creative-biomart.com  Fax: 1-631-938-8127

 45-1 Ramsey Road, Shirley, NY 11967, USA

EHTEVLQLLSPPGIKITVNPESKAVLAGQFVKLCCRATGHPFVQYQWFKMNKEIPNG
 NTSELIFNAVHVKDAGFYVCRVNNNFTFEFSQWSQLDVCIPESFQRSVDGVSESK
 LQICVEPTSQKLMPGSTLVLQCVAVGSPIPHYQWFKNELPLTHETKKLYMVPYVDLE
 HQGTYWCHVYNDRDSQDSKKVEIIIGRTDEAVECTEDELNNLGHPDNKEQTTDQPL
 AKDKVALLIGNMNYREHPKLKAPLVDVYELTNLLRQLDFKVVSLDLTEYEMRNAVD
 EFLLLLDKGVYGLLYYAGHGYENFGNSFMVPVDAPNPYRSENCLCVQNILKLMQEK
 ETGLNVFLDMCRKRNDYDDTIPILDALKVTANIVFGYATCQGAEAFEIQHSGLANGIF
 MKFLKDRILLEDKKITVLLDEVAEDMGKCHLTGKQALEIRSSLSEKRALTDPIQGTEY
 SAESLVRNLQWAKAHELPEMCLKFDCGVQIQLGFAAEFSNVMIIYTSIVYKPPEIIMC
 DAYVTDFPLDLIDPKDANKGTPEETGSYLVSKDLPHKCLYTRLSSLQKLKEHLVFTV
 CLSYQYSGLEDTVEDKQEVNVGKPLIAKLDMHRGLGRKTCFQTCLMSNGPYQSSAA
 TSGGAGHYHSLQDPFHGVYHSHPGNPSNVTPADSCHCSRTPDAFISSFAHHSCH
 FRSNVPVETTDEIPFSFSDRLRISEKTRTRPLEQKLISEEDLAANDILDYKDDDDKV

Purity > 80% as determined by SDS-PAGE and Coomassie blue staining

Stability Stable for 3 months from receipt of products under proper storage and handling conditions.

Storage Store at -80 centigrade. Avoid repeated freeze-thaw cycles.

Concentration 50 µg/mL as determined by BCA

Storage Buffer 100 mM glycine, 25 mM Tris-HCl, pH 7.3.

GENE INFORMATION

Gene Name MALT1 mucosa associated lymphoid tissue lymphoma translocation gene 1 [Homo sapiens (human)]

Official Symbol MALT1

 Tel: 1-631-559-9269 1-516-512-3133

 Email: info@creative-biomart.com  Fax: 1-631-938-8127

 45-1 Ramsey Road, Shirley, NY 11967, USA

Synonyms MALT1; mucosa associated lymphoid tissue lymphoma translocation gene 1; MLT; mucosa-associated lymphoid tissue lymphoma translocation protein 1; paracaspase; caspase-like protein; MALT associated translocation; MALT lymphoma-associated translocation; MALT-lymphoma associated translocation; MLT1; DKFZp434L132;

Gene ID 10892

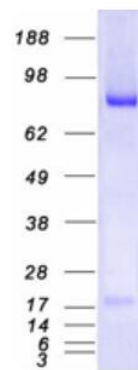
mRNA Refseq NM_006785

Protein Refseq NP_006776

MIM 604860

UniProt ID Q9UDY8

SDS-PAGE



 Tel: 1-631-559-9269 1-516-512-3133

 Email: info@creative-biomart.com  Fax: 1-631-938-8127

 45-1 Ramsey Road, Shirley, NY 11967, USA