

Recombinant Full Length Human MAML1 Protein, C-Flag-tagged

Cat. No. MAML1-1127HFL **Lot. No.** (See product label)

SPECIFICATION

Product Overview	Recombinant Full Length Human MAML1 Protein, fused to Flag-tag at C-terminus, was expressed in Mammalian cells.
Species	Human
Source	Mammalian Cells
Description	<p>This protein is the human homolog of mastermind, a Drosophila protein that plays a role in the Notch signaling pathway involved in cell-fate determination. There is in vitro evidence that the human homolog forms a complex with the intracellular portion of human Notch receptors and can increase expression of a Notch-induced gene. This evidence supports its proposed function as a transcriptional co-activator in the Notch signaling pathway.</p>
Form	25 mM Tris HCl, pH 7.3, 100 mM glycine, 10% glycerol.
Molecular Mass	107.9 kDa
AA Sequence	<p>MVLPTCPMAEFALPRHSVMERLRRRIELCRRHHSTCEARYEAVSPERLELERQHT FALHQRCIQAKAKR AGKHRQPPAATAPAPAAPAPRLDAADGPEHGRPATHLHDTV KRNLDSATSPQNGDQQNGYGDLFPGHKKT RREAPLGVAISSNGLPPASPLGQSDK PSGADALQSSGKHSGLDLSLNKKRLADSSLHLNNGGSPSESFPL SLNKELKQEPVE DLPCMITGTVGSISQSNLMPDLNLNEQEWKELIEELNRSVPDEDMKDLFNEDFEEKK D PESSGSATQTPLAQDINIKTEFSPAAFEQEQLGSPQVRAGSAGQTFLGPSSAPVS</p>

 Tel: 1-631-559-9269 1-516-512-3133

 Email: info@creative-biomart.com  Fax: 1-631-938-8127

 45-1 Ramsey Road, Shirley, NY 11967, USA



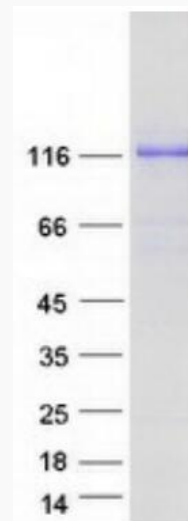
TDSPSLGGSQTLFHT SGQPRADNPSPNLMPASAAQAQNAQRALAGVVLPSSQGGP
 ASELSSAHQLQQIAAKQKREQMLQNPQQATP APAPGQMSTWQQTGPSHSSLDVP
 YPMEKPASPSSYKQDFTNSKLLMMPSVNKSSPRPGGPYLQPSHVNLL SHQPPSNL
 NQNSANNQGSVLDYGN TKPLSHYKADCGQGSPGSGQSKPALMAYLPQQLSHISHE
 QNSLFLM KPKPGNMPFRSLVPPGQEQNPSSVPVQAQATSVGTQPPAVSVASSHN
 SSPYLSSQQQAAMKQHQLLLDQ QKQREQQQKHLQQQQFLQRQQHLLAEQEKQ
 QFQRHLTRPPPQYQDPTQGSFPQQVVGQFTGSSAAVPGMNT LGPSNSSCPRVFPQ
 AGNLMMPGPGHASVSSLPTNSGQQDRGVAQFPGSQNMPQSSLYGMASGITQIVA
 QP PPQATNGHAHIPRQTNVGQNTSVSAAYGQNSLGSSGLSQQHNKGTLPGLTKP
 PVPRVSPAMGGQNSSWQ HQGMPNLSGQTPGNSNVSPFTAASSFHMQQQAHLKM
 SSPQFSQAVPNRPMAPMSSAAAVGSLPPVSAQQ RTSAPAPAPPPTAPQQGLPGL
 SPAGPELGAFSQSPASQMGGRAGLHCTQAYPVRTAGQELPFAYSGQPPG
 SGLSSVAGHTDLIDSLKNTSEEWMSDLDDLLGSQTRTRPLEQKLISEEDLAANDIL
 DYKDDDDKV

Purity	> 80% as determined by SDS-PAGE and Coomassie blue staining.
Stability	Stable for 12 months from the date of receipt of the product under proper storage and handling conditions. Avoid repeated freeze-thaw cycles.
Storage	Store at -80 centigrade.
Concentration	>50 ug/mL as determined by microplate BCA method.
Preparation	Recombinant protein was captured through anti-DDK affinity column followed by conventional chromatography steps.
Protein Pathways	Notch signaling pathway
Full Length	Full L.

Tel: 1-631-559-9269 1-516-512-3133

Email: info@creative-biomart.com Fax: 1-631-938-8127

45-1 Ramsey Road, Shirley, NY 11967, USA

GENE INFORMATION**Gene Name** MAML1 mastermind like transcriptional coactivator 1 [Homo sapiens (human)]**Official Symbol** MAML1**Synonyms** Mam1; Mam-1**Gene ID** 9794**mRNA Refseq** NM_014757.5**Protein Refseq** NP_055572.1**MIM** 605424**UniProt ID** Q92585 Tel: 1-631-559-9269 1-516-512-3133 Email: info@creative-biomart.com  Fax: 1-631-938-8127 45-1 Ramsey Road, Shirley, NY 11967, USA



Coomassie blue staining of purified MAML1 protein.

 Tel: 1-631-559-9269 1-516-512-3133

 Email: info@creative-biomart.com  Fax: 1-631-938-8127

 45-1 Ramsey Road, Shirley, NY 11967, USA