

# Recombinant Human MAN1B1 Protein (Asp106-Ala699), C-His tagged

Cat. No. MAN1B1-3972H Lot. No. (See product label)

## SPECIFICATION

<b>Product Overview</b>	Recombinant human MAN1B1 (Asp106-Ala699) fused with the C-terminal His tag was expressed in Mammalian cells.
<b>Species</b>	Human
<b>Source</b>	Mammalian Cells
<b>ProteinLength</b>	Asp106-Ala699
<b>Form</b>	Lyophilized powder/frozen liquid
<b>Molecular Mass</b>	65.34 kDa
<b>Endotoxin</b>	< 1.0 EU/μg of the protein as determined by the LAL method.
<b>Purity</b>	>90% as determined by SDS-PAGE.
<b>Notes</b>	For research use only.
<b>Storage</b>	Use a manual defrost freezer and avoid repeated freeze thaw cycles. Store at 2 to 8 centigrade for one week. Store at -20 to -80 centigrade for twelve months from the date of receipt.
<b>Storage Buffer</b>	Supplied as solution form in PBS or lyophilized from PBS.

 Tel: 1-631-559-9269 1-516-512-3133

 Email: [info@creative-biomart.com](mailto:info@creative-biomart.com)  Fax: 1-631-938-8127

 45-1 Ramsey Road, Shirley, NY 11967, USA

**Reconstitution** Reconstitute in sterile water for a stock solution.

**Shipping** They are shipped out with dry ice/blue ice unless customers require otherwise.

## GENE INFORMATION

**Gene Name** [MAN1B1 mannosidase, alpha, class 1B, member 1 \[ Homo sapiens \(human\) \]](#)

**Official Symbol** [MAN1B1](#)

**Synonyms**

MAN1B1; mannosidase, alpha, class 1B, member 1; endoplasmic reticulum mannosyl-oligosaccharide 1,2-alpha-mannosidase; alpha 1; 2 mannosidase; endoplasmic reticulum alpha mannosidase 1; endoplasmic reticulum mannosyl oligosaccharide 1; 2 alpha mannosidase 1; ER alpha 1; Man9GlcNAc2 specific processing alpha mannosidase; MANA ER; ER alpha 1,2-mannosidase; Man9GlcNAc2-specific processing alpha-mannosidase; endoplasmic reticulum mannosyl-oligosaccharide 1,2-alpha-mannosidase 1; MRT15; ERMAN1; MANA-ER; FLJ37559;

**Gene ID** [11253](#)

**mRNA Refseq** [NM\\_016219](#)

**Protein Refseq** [NP\\_057303](#)

**MIM** [604346](#)

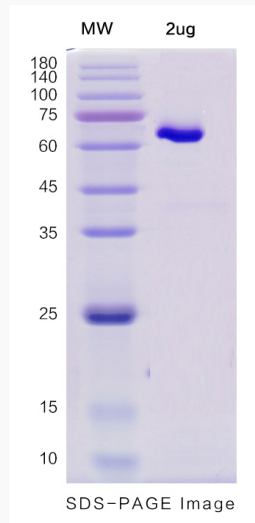
**UniProt ID** [Q9UKM7](#)

 Tel: 1-631-559-9269 1-516-512-3133

 Email: [info@creative-biomart.com](mailto:info@creative-biomart.com)  Fax: 1-631-938-8127

 45-1 Ramsey Road, Shirley, NY 11967, USA

**SDS-PAGE**



 Tel: 1-631-559-9269 1-516-512-3133

 Email: [info@creative-biomart.com](mailto:info@creative-biomart.com)  Fax: 1-631-938-8127

 45-1 Ramsey Road, Shirley, NY 11967, USA