

Recombinant Human MAN2C1 Protein, Myc/DDK-tagged, C13 and N15-labeled

Cat. No. MAN2C1-818H Lot. No. (See product label)

SPECIFICATION

Product Overview

MAN2C1 MS Standard C13 and N15-labeled recombinant protein (NP_006706) with a C-terminal MYC/DDK tag, was expressed in HEK293 cells.

Species

Human

Source

HEK293

Description

Cleaves alpha 1,2-, alpha 1,3-, and alpha 1,6-linked mannose residues from glycoproteins. Involved in the degradation of free oligosaccharides in the cytoplasm.

Molecular Mass

115.8 kDa

AA Sequence

MAAAPALKHWRTTLERVEKFVSPLYFTDCNLRGRLFGASCPVAVLSSFLTPERLPYQ
 EAVQRDFRPAQVGDSEFGPTWWTCWFRVELTIPEAWVGQEVHLCWESDGEGLVW
 RDGEPVQGLTKEGEKTSYVLTDRDLGERDPRSLTYVEVACNGLLGAGKGSMAIAPD
 PEKMFQLSRAELAVFHRDVHMLLDVLELLLGIKGLGKDNQRSFQALYTANQMNVN
 CDPAQPETFPVAQALASRFFGQHGGESQHTIHATGHCHIDTAWLWPFKETVRKCAR
 SWVTALQLMERNPEFIFACSQAQQLLEWVKSRYPLYSRIQEFACRGQFVPVGGTW
 VEMDGNLPSGEAMVRQFLQGQNFLLQEFGKMCSEFWLPDTFGYSAQLPQIMHGC
 GIRRFLTQKLSWNLVNSFPHTFFWEGLDGSRLVHFPFGDSYGMQGSVEEVKTV
 ANNRDKGRANHS AFLFGFDGGGGPTQTMLDRLKRLSNTDGLPRVQLSSPRQLFS
 ALES DSEQLCTWVGELFLELHNGTYTTHAQIKKGNRE CERILHDVELLSSLALARSA
 QFLYPAAQLQHLWRLLLLNQFHDVVTGSCIQMVAEEAMCHYEDIRSHGNTLLSAAA

Tel: 1-631-559-9269 1-516-512-3133

Email: info@creative-biomart.com Fax: 1-631-938-8127

45-1 Ramsey Road, Shirley, NY 11967, USA

AALCAGEPGPEGLLIVNTLPWKRIEVMALPKPGGAHSLALVTVPSMGYAPVPPPTSL
 QPLLQQPVFVQETDGSVTLDNNGIIRVKLDPTGRLTSLVLVASGREIAIEGAVGNQ
 FVLFDDVPLYWDAWDVMDYHLETRKPVLGQAGTLAVGTEGGLRGSWFLQISPN
 SRLSQEVVLDVGCOPYVRFHTEVHWHEAHKFLKVEFFPARVVRSSQATYEIQFGHLQRP
 THYNTSWDWARFEVWAHRWMDLSEHGFGGLALLNDCKYGASVRGSILSLSLLRAPK
 APDATADTGRHEFTYALMPHKGSFQDAGVIQAAYSLSNFPLLALPAPSPAPATSWSAF
 SVSSPAVVLETVKQAESSPQRRSLVRLRYEAHGSHVDCWLHLSLPVQEAILCDLLER
 PDPAGHLTLRDNRLKLTFSFQVLSLLLVLQPPPHTRTRPLEQKLISEEDLAANDILDY
 KDDDDKV

Purity > 80% as determined by SDS-PAGE and Coomassie blue staining

Stability Stable for 3 months from receipt of products under proper storage and handling conditions.

Storage Store at -80 centigrade. Avoid repeated freeze-thaw cycles.

Concentration 50 µg/mL as determined by BCA

Storage Buffer 100 mM glycine, 25 mM Tris-HCl, pH 7.3.

GENE INFORMATION

Gene Name [MAN2C1 mannosidase alpha class 2C member 1 \[Homo sapiens \(human\) \]](#)

Official Symbol [MAN2C1](#)

Synonyms MAN2C1; mannosidase, alpha, class 2C, member 1; MANA, MANA1; alpha-mannosidase 2C1; alpha mannosidase 6A8B; mannosidase, alpha 6A8; alpha-D-mannoside mannosidase; mannosidase, alpha A, cytoplasmic; MANA; MANA1; MAN6A8; MGC87979; DKFZp686E23167;

 Tel: 1-631-559-9269 1-516-512-3133

 Email: info@creative-biomart.com  Fax: 1-631-938-8127

 45-1 Ramsey Road, Shirley, NY 11967, USA

Gene ID 4123

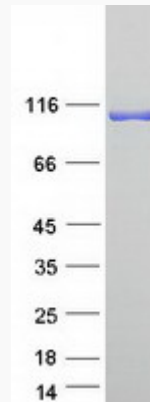
mRNA Refseq NM_006715

Protein Refseq NP_006706

MIM 154580

UniProt ID Q9NTJ4

SDS-PAGE



Tel: 1-631-559-9269 1-516-512-3133

Email: info@creative-biomart.com Fax: 1-631-938-8127

45-1 Ramsey Road, Shirley, NY 11967, USA