

## Recombinant Human MANF protein

Cat. No. MANF-192H Lot. No. (See product label)

### SPECIFICATION

<b>Product Overview</b>	Recombinant Human MANF was expressed in E. coli.
<b>Species</b>	Human
<b>Source</b>	E.coli
<b>Description</b>	MANF is a neurotrophic factor found mainly in central nervous tissues where it may remain localized to the endoplasmic reticulum/Golgi apparatus, or secreted. It has been shown that MANF plays an important role in protecting cells against tunicamycin and thapsigargin -induced cell death. Without MANF, cells become increasingly vulnerable to the aforementioned drugs. Also, MANF is structurally homologous to CDNF.
<b>Form</b>	Lyophilized from a 0.2 µm filtered solution in PBS
<b>Molecular Mass</b>	18.4 kDa
<b>Endotoxin</b>	<1.0 EU/µg of recombinant protein as determined by the LAL method.
<b>Purity</b>	95%
<b>Applications</b>	Cell Assay
<b>Storage</b>	The lyophilized protein is stable for at least one year from date of receipt at -70 centigrade. Upon reconstitution, this cytokine can be stored in working aliquots at 2

 Tel: 1-631-559-9269 1-516-512-3133

 Email: [info@creative-biomart.com](mailto:info@creative-biomart.com)  Fax: 1-631-938-8127

 45-1 Ramsey Road, Shirley, NY 11967, USA

centigrade- 8 centigrade for one month, or at -20 centigrade for six months, with a carrier protein without detectable loss of activity. Avoid repeated freeze/thaw cycles.

**Reconstitution** Reconstitute at 200 µg/mL in PBS

## GENE INFORMATION

**Gene Name** MANF mesencephalic astrocyte-derived neurotrophic factor [ Homo sapiens ]

**Official Symbol** MANF

**Synonyms** MANF; mesencephalic astrocyte-derived neurotrophic factor; arginine rich, mutated in early stage tumors , ARMET; ARP; arginine-rich, mutated in early stage tumors; ARMET; MGC142148; MGC142150;

**Gene ID** 7873

**mRNA Refseq** NM\_006010

**Protein Refseq** NP\_006001

**MIM** 601916

**UniProt ID** P55145

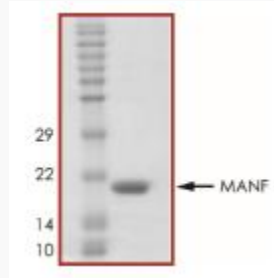
**Chromosome Location** 3p21.1

**Function** growth factor activity; molecular\_function;

 Tel: 1-631-559-9269 1-516-512-3133

 Email: [info@creative-biomart.com](mailto:info@creative-biomart.com)  Fax: 1-631-938-8127

 45-1 Ramsey Road, Shirley, NY 11967, USA



Tel: 1-631-559-9269 1-516-512-3133

Email: [info@creative-biomart.com](mailto:info@creative-biomart.com) Fax: 1-631-938-8127

45-1 Ramsey Road, Shirley, NY 11967, USA