

Recombinant Human MANF Protein (Leu25-Leu182), C-His tagged

Cat. No. MANF-5171H Lot. No. (See product label)

SPECIFICATION

Product Overview	Recombinant human MANF (Leu25-Leu182) fused with the C-terminal His tag was expressed in Mammalian cells.
Species	Human
Source	Mammalian Cells
ProteinLength	Leu25-Leu182
Form	Lyophilized powder/frozen liquid
Molecular Mass	17.38 kDa
Endotoxin	< 1.0 EU/μg of the protein as determined by the LAL method.
Purity	>90% as determined by SDS-PAGE.
Notes	For research use only.
Storage	Use a manual defrost freezer and avoid repeated freeze thaw cycles. Store at 2 to 8 centigrade for one week. Store at -20 to -80 centigrade for twelve months from the date of receipt.
Storage Buffer	Supplied as solution form in PBS or lyophilized from PBS.

 Tel: 1-631-559-9269 1-516-512-3133

 Email: info@creative-biomart.com  Fax: 1-631-938-8127

 45-1 Ramsey Road, Shirley, NY 11967, USA

Reconstitution Reconstitute in sterile water for a stock solution.

Shipping They are shipped out with dry ice/blue ice unless customers require otherwise.

GENE INFORMATION

Gene Name [MANF mesencephalic astrocyte-derived neurotrophic factor \[Homo sapiens \(human\) \]](#)

Official Symbol [MANF](#)

Synonyms MANF; mesencephalic astrocyte-derived neurotrophic factor; arginine rich, mutated in early stage tumors, ARMET; ARP; arginine-rich, mutated in early stage tumors; ARMET; MGC142148; MGC142150;

Gene ID [7873](#)

mRNA Refseq [NM_006010](#)

Protein Refseq [NP_006001](#)

MIM [601916](#)

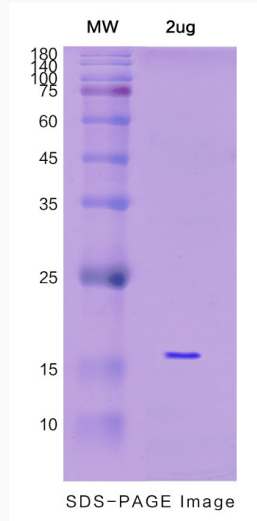
UniProt ID [P55145](#)

 Tel: 1-631-559-9269 1-516-512-3133

 Email: info@creative-biomart.com  Fax: 1-631-938-8127

 45-1 Ramsey Road, Shirley, NY 11967, USA

SDS-PAGE



 Tel: 1-631-559-9269 1-516-512-3133

 Email: info@creative-biomart.com  Fax: 1-631-938-8127

 45-1 Ramsey Road, Shirley, NY 11967, USA