

## Recombinant Human MAP1B protein, His-tagged

**Cat. No.** MAP1B-3807H    **Lot. No.** (See product label)

### SPECIFICATION

<b>Product Overview</b>	Recombinant Human MAP1B protein(414-567 aa), fused with N-terminal His tag, was expressed in E.coli.
<b>Species</b>	Human
<b>Source</b>	E.coli
<b>ProteinLength</b>	414-567 aa
<b>Form</b>	The purified protein was Lyophilized from sterile PBS (58mM Na <sub>2</sub> HPO <sub>4</sub> , 17mM NaH <sub>2</sub> PO <sub>4</sub> , 68mM NaCl, pH7.4). 5 % trehalose and 5 % mannitol are added as protectant before lyophilization. The elution buffer contain 300mM imidazole.
<b>AASequence</b>	DSRESLKPAAKPLPSKSVRKESKEETPEVTKVNHVEKPPKVESKEKVMVKKDKPVK TETKPSVTEKEVPSKEEPSVKAEVAEKQATDVKPKAAKEKTVKKETKVKPEDKKEE KEKPKKEVAKKEDKTPIKKEEKPKKKEEVKKEVKKEIKKEEK
<b>Purity</b>	85%, by SDS-PAGE with Coomassie Brilliant Blue staining.
<b>Storage</b>	Store at 2-8°C for 1-2 weeks. Aliquot and store at -20°C to -80°C for up to 3 months, reconstitution with sterile water and addition of an equal volume of glycerol. Avoid repeat freeze-thaw cycles.
<b>Reconstitution</b>	Dissolve the product in 200 µl sterile water to achieve a working concentration of 0.25 g/µl. If experimental compatibility allows, mix the aqueous solution with an equal

 Tel: 1-631-559-9269    1-516-512-3133

 Email: [info@creative-biomart.com](mailto:info@creative-biomart.com)     Fax: 1-631-938-8127

 45-1 Ramsey Road, Shirley, NY 11967, USA

volume of glycerol (1:1 ratio) after initial reconstitution.

## GENE INFORMATION

<b>Gene Name</b>	MAP1B microtubule-associated protein 1B [ Homo sapiens ]
<b>Official Symbol</b>	MAP1B
<b>Synonyms</b>	MAP1B; microtubule-associated protein 1B; MAP5; MAP-1B; FUTSCH; FLJ38954; DKFZp686E1099; DKFZp686F1345;
<b>Gene ID</b>	4131
<b>mRNA Refseq</b>	NM_005909
<b>Protein Refseq</b>	NP_005900
<b>MIM</b>	157129
<b>UniProt ID</b>	P46821

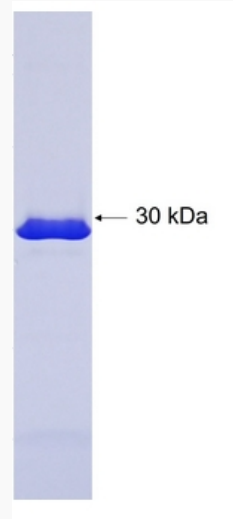
 Tel: 1-631-559-9269 1-516-512-3133

 Email: [info@creative-biomart.com](mailto:info@creative-biomart.com)  Fax: 1-631-938-8127

 45-1 Ramsey Road, Shirley, NY 11967, USA



SDS-PAGE



☎ Tel: 1-631-559-9269 1-516-512-3133

☎ Email: [info@creative-biomart.com](mailto:info@creative-biomart.com) ☎ Fax: 1-631-938-8127

☎ 45-1 Ramsey Road, Shirley, NY 11967, USA