

Recombinant Human MAP1B protein, His & T7-tagged

Cat. No. MAP1B-8189H Lot. No. (See product label)

SPECIFICATION

Product Overview	Recombinant Human MAP1B aa. (Asp2207~Leu2468 (Accession # P46821)) fused with N-terminal His & T7 tag was produced in E. coli cells.
Species	Human
Source	E.coli
ProteinLength	Asp2207~Leu2468
Description	<p>This gene encodes a protein that belongs to the microtubule-associated protein family. The proteins of this family are thought to be involved in microtubule assembly, which is an essential step in neurogenesis. The product of this gene is a precursor polypeptide that presumably undergoes proteolytic processing to generate the final MAP1B heavy chain and LC1 light chain. Gene knockout studies of the mouse microtubule-associated protein 1B gene suggested an important role in development and function of the nervous system.</p>
Form	Freeze-dried powder
Molecular Mass	Predicted Molecular Mass: 32.0kDa.
Endotoxin	<1.0EU per 1ug (determined by the LAL method)
Purity	>95%

 Tel: 1-631-559-9269 1-516-512-3133

 Email: info@creative-biomart.com  Fax: 1-631-938-8127

 45-1 Ramsey Road, Shirley, NY 11967, USA

Characteristic	The isoelectric point is 9.3.
Applications	SDS-PAGE; WB; ELISA; IP.
Stability	The thermal stability is described by the loss rate of the target protein. The loss rate was determined by accelerated thermal degradation test, that is, incubate the protein at 37°C for 48h, and no obvious degradation and precipitation were observed. (Referring from China Biological Products Standard, which was calculated by the Arrhenius equation.) The loss of this protein is less than 5% within the expiration date under appropriate storage condition.
Storage	Avoid repeated freeze/thaw cycles. Store at 2-8°C for one month. Aliquot and store at -80°C for 12 months.
Storage Buffer	Supplied as lyophilized form in 20mM Tris, 150mM NaCl, pH8.0, containing 1mM EDTA, 1mM DTT, 0.01% sarcosyl, 5% trehalose, and preservative.
Reconstitution	Reconstitute in sterile ddH ₂ O.

GENE INFORMATION

Gene Name	MAP1B microtubule associated protein 1B [Homo sapiens (human)]
Official Symbol	MAP1B
Synonyms	MAP1B; microtubule associated protein 1B; MAP5; FUTSCH; PPP1R102; microtubule-associated protein 1B; protein phosphatase 1, regulatory subunit 102
Gene ID	4131
mRNA Refseq	NM_005909.4

 Tel: 1-631-559-9269 1-516-512-3133

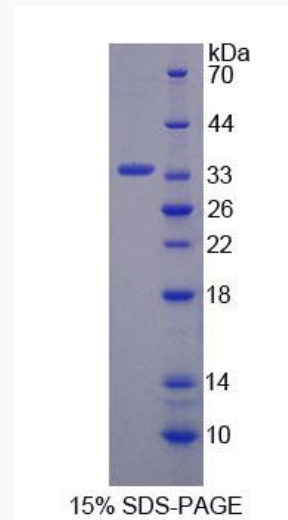
 Email: info@creative-biomart.com  Fax: 1-631-938-8127

 45-1 Ramsey Road, Shirley, NY 11967, USA

Protein Refseq NP_005900.2

UniProt ID P46821

SDS-PAGE



 Tel: 1-631-559-9269 1-516-512-3133

 Email: info@creative-biomart.com  Fax: 1-631-938-8127

 45-1 Ramsey Road, Shirley, NY 11967, USA