

## Active Recombinant Human MAP1D protein, His-tagged

Cat. No. MAP1D-2201H Lot. No. (See product label)

### SPECIFICATION

<b>Product Overview</b>	Active Recombinant Human MAP1D protein(NP_954697.1) (Arg 44-Ala 335) was expressed in Insect Cells, with an initial Met at the N-terminus and a polyhistidine tag at the C-terminus.
<b>Species</b>	Human
<b>Source</b>	Insect Cells
<b>ProteinLength</b>	44-335 aa
<b>Form</b>	Lyophilized from sterile 50mM Tris, 100mM NaCl, pH 8.0.
<b>Bio-activity</b>	Measure by its ability to remove methionine from a fluorogenic peptide substrate H-Met-Gly--AMC. The resulting GP-AMC is cleaved by human DPPIV/CD26. The specific activity is >30 pmoles/min/μg.
<b>Molecular Mass</b>	The secreted recombinant human MAP1D consists of 303 amino acids and predicts a molecular mass of 33.4 kDa. It migrates as an approximately 36 kDa band in SDS-PAGE under reducing conditions.
<b>Endotoxin</b>	< 1.0 EU per μg of the protein as determined by the LAL method.
<b>Purity</b>	> 92 % as determined by SDS-PAGE
<b>Storage</b>	Store it under sterile conditions at -20°C to -80°C upon receiving. Recommend to

 Tel: 1-631-559-9269 1-516-512-3133

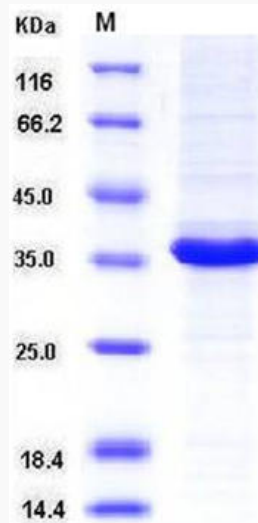
 Email: [info@creative-biomart.com](mailto:info@creative-biomart.com)  Fax: 1-631-938-8127

 45-1 Ramsey Road, Shirley, NY 11967, USA

aliquot the protein into smaller quantities for optimal storage. Avoid repeated freeze-thaw cycles.

**Reconstitution**

It is recommended that sterile water be added to the vial to prepare a stock solution of 0.2 ug/ul. Centrifuge the vial at 4°C before opening to recover the entire contents.

**SDS-PAGE**

 Tel: 1-631-559-9269 1-516-512-3133

 Email: [info@creative-biomart.com](mailto:info@creative-biomart.com)  Fax: 1-631-938-8127

 45-1 Ramsey Road, Shirley, NY 11967, USA