

## Recombinant Human MAP1LC3A Protein (Met1-Phe121), C-His tagged

Cat. No. MAP1LC3A-3796H Lot. No. (See product label)

### SPECIFICATION

<b>Product Overview</b>	Recombinant human MAP1LC3A (Met1-Phe121) fused with the C-terminal His tag was expressed in E. coli.
<b>Species</b>	Human
<b>Source</b>	E.coli
<b>ProteinLength</b>	Met1-Phe121
<b>Description</b>	<p>MAP1A and MAP1B are microtubule-associated proteins which mediate the physical interactions between microtubules and components of the cytoskeleton. MAP1A and MAP1B each consist of a heavy chain subunit and multiple light chain subunits. The protein encoded by this gene is one of the light chain subunits and can associate with either MAP1A or MAP1B. Two transcript variants encoding different isoforms have been found for this gene. The expression of variant 1 is suppressed in many tumor cell lines, suggesting that may be involved in carcinogenesis.</p>
<b>Form</b>	Lyophilized powder/frozen liquid
<b>Molecular Mass</b>	13.31 kDa
<b>Purity</b>	>90% as determined by SDS-PAGE.
<b>Notes</b>	For research use only.

 Tel: 1-631-559-9269 1-516-512-3133

 Email: [info@creative-biomart.com](mailto:info@creative-biomart.com)  Fax: 1-631-938-8127

 45-1 Ramsey Road, Shirley, NY 11967, USA

<b>Storage</b>	Use a manual defrost freezer and avoid repeated freeze thaw cycles. Store at 2 to 8 centigrade for one week. Store at -20 to -80 centigrade for twelve months from the date of receipt.
<b>Storage Buffer</b>	Supplied as solution form in PBS or lyophilized from PBS.
<b>Reconstitution</b>	Reconstitute in sterile water for a stock solution.
<b>Shipping</b>	They are shipped out with dry ice/blue ice unless customers require otherwise.

## GENE INFORMATION

<b>Gene Name</b>	MAP1LC3A microtubule-associated protein 1 light chain 3 alpha [ Homo sapiens (human) ]
<b>Official Symbol</b>	MAP1LC3A
<b>Synonyms</b>	MAP1LC3A; microtubule-associated protein 1 light chain 3 alpha; ATG8E; LC3; LC3A; MAP1ALC3; MAP1BLC3;
<b>Gene ID</b>	84557
<b>mRNA Refseq</b>	NM_181509
<b>Protein Refseq</b>	NP_852610
<b>MIM</b>	601242
<b>UniProt ID</b>	Q9H492

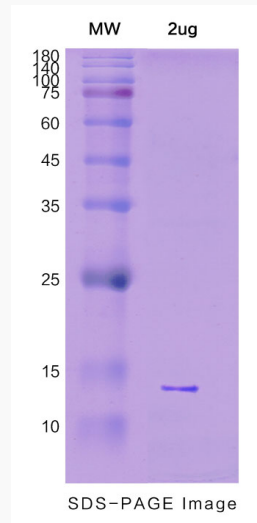
 Tel: 1-631-559-9269 1-516-512-3133

 Email: [info@creative-biomart.com](mailto:info@creative-biomart.com)  Fax: 1-631-938-8127

 45-1 Ramsey Road, Shirley, NY 11967, USA



**SDS-PAGE**



Tel: 1-631-559-9269 1-516-512-3133

Email: [info@creative-biomart.com](mailto:info@creative-biomart.com) Fax: 1-631-938-8127

45-1 Ramsey Road, Shirley, NY 11967, USA