

Recombinant Human MAP1LC3A Protein (Met1-Gly120), N-His tagged

Cat. No. MAP1LC3A-3797H Lot. No. (See product label)

SPECIFICATION

Product Overview	Recombinant human MAP1LC3A (Met1-Gly120) fused with the N-His tag was expressed in E. coli.
Species	Human
Source	E.coli
ProteinLength	Met1-Gly120
Description	<p>MAP1A and MAP1B are microtubule-associated proteins which mediate the physical interactions between microtubules and components of the cytoskeleton. MAP1A and MAP1B each consist of a heavy chain subunit and multiple light chain subunits. The protein encoded by this gene is one of the light chain subunits and can associate with either MAP1A or MAP1B. Two transcript variants encoding different isoforms have been found for this gene. The expression of variant 1 is suppressed in many tumor cell lines, suggesting that may be involved in carcinogenesis.</p>
Form	Lyophilized powder/frozen liquid
Molecular Mass	16.44 kDa
Purity	>90% as determined by SDS-PAGE.
Notes	For research use only.

 Tel: 1-631-559-9269 1-516-512-3133

 Email: info@creative-biomart.com  Fax: 1-631-938-8127

 45-1 Ramsey Road, Shirley, NY 11967, USA

Storage	Use a manual defrost freezer and avoid repeated freeze thaw cycles. Store at 2 to 8 centigrade for one week. Store at -20 to -80 centigrade for twelve months from the date of receipt.
Storage Buffer	0.01M PBS, pH 7.4, 0.02% NLS
Reconstitution	Reconstitute in sterile water for a stock solution.
Shipping	They are shipped out with dry ice/blue ice unless customers require otherwise.

GENE INFORMATION

Gene Name	MAP1LC3A microtubule-associated protein 1 light chain 3 alpha [Homo sapiens (human)]
Official Symbol	MAP1LC3A
Synonyms	MAP1LC3A; microtubule-associated protein 1 light chain 3 alpha; ATG8E; LC3; LC3A; MAP1ALC3; MAP1BLC3;
Gene ID	84557
mRNA Refseq	NM_181509
Protein Refseq	NP_852610
MIM	601242
UniProt ID	Q9H492

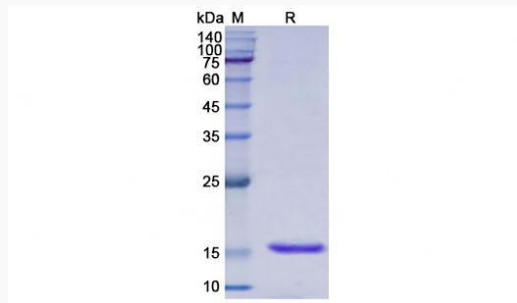
 Tel: 1-631-559-9269 1-516-512-3133

 Email: info@creative-biomart.com  Fax: 1-631-938-8127

 45-1 Ramsey Road, Shirley, NY 11967, USA



SDS-PAGE



Tel: 1-631-559-9269 1-516-512-3133

Email: info@creative-biomart.com Fax: 1-631-938-8127

45-1 Ramsey Road, Shirley, NY 11967, USA