

Recombinant Human MAP1LC3B Protein, His-tagged

Cat. No. MAP1LC3B-2412H Lot. No. (See product label)

SPECIFICATION

Product Overview	Recombinant Human MAP1LC3B Protein (Met1-Gly120) with a N-His tag was expressed in E. coli.
Species	Human
Source	E.coli
ProteinLength	Met1-Gly120
Description	The product of this gene is a subunit of neuronal microtubule-associated MAP1A and MAP1B proteins, which are involved in microtubule assembly and important for neurogenesis. Studies on the rat homolog implicate a role for this gene in autophagy, a process that involves the bulk degradation of cytoplasmic component.
Form	Freeze-dried powder
Molecular Mass	Predicted Molecular Mass: 17.7 kDa Accurate Molecular Mass: 20 kDa
Endotoxin	<1.0 EU per 1g (determined by the LAL method).
Purity	> 90%
Applications	Positive Control; Immunogen; SDS-PAGE; WB.

 Tel: 1-631-559-9269 1-516-512-3133

 Email: info@creative-biomart.com  Fax: 1-631-938-8127

 45-1 Ramsey Road, Shirley, NY 11967, USA



Stability	The thermal stability is described by the loss rate. The loss rate was determined by accelerated thermal degradation test, that is, incubate the protein at 37 centigrade for 48h, and no obvious degradation and precipitation were observed. The loss rate is less than 5% within the expiration date under appropriate storage condition.
Storage	Avoid repeated freeze/thaw cycles. Store at 2-8 centigrade for one month. Aliquot and store at -80 centigrade for 12 months.
Storage Buffer	20mM Tris, 150mM NaCl, pH8.0, containing 1mM EDTA, 1mM DTT, 0.01% SKL, 5% Trehalose and Proclin300.
Reconstitution	Reconstitute in 20mM Tris, 150mM NaCl (pH8.0) to a concentration of 0.1-1.0 mg/mL. Do not vortex.

GENE INFORMATION

Gene Name	MAP1LC3B microtubule-associated protein 1 light chain 3 beta [Homo sapiens (human)]
Official Symbol	MAP1LC3B
Synonyms	MAP1LC3B; microtubule-associated protein 1 light chain 3 beta; microtubule-associated proteins 1A/1B light chain 3B; ATG8F; MAP1A/MAP1B LC3 B; MAP1A/MAP1B light chain 3 B; MAP1 light chain 3-like protein 2; autophagy-related ubiquitin-like modifier LC3 B; LC3B; MAP1LC3B-a; MAP1A/1BLC3;
Gene ID	81631
mRNA Refseq	NM_022818
Protein Refseq	NP_073729

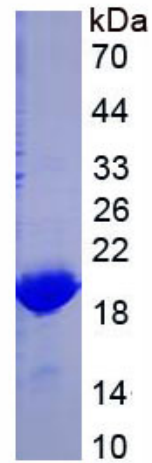
Tel: 1-631-559-9269 1-516-512-3133

Email: info@creative-biomart.com Fax: 1-631-938-8127

45-1 Ramsey Road, Shirley, NY 11967, USA

MIM 609604

UniProt ID Q9GZQ8



 Tel: 1-631-559-9269 1-516-512-3133

 Email: info@creative-biomart.com  Fax: 1-631-938-8127

 45-1 Ramsey Road, Shirley, NY 11967, USA