

Recombinant Human MAP1LC3B protein, His-tagged

Cat. No. MAP1LC3B-2433H Lot. No. (See product label)

SPECIFICATION

Product Overview	Recombinant Human MAP1LC3B protein(Q9GZQ8)(1-120aa), fused with N-terminal His tag, was expressed in Yeast.
Species	Human
Source	Yeast
ProteinLength	1-120aa
Tag	N-His
Form	If the delivery form is liquid, the default storage buffer is Tris/PBS-based buffer, 5%-50% glycerol. If the delivery form is lyophilized powder, the buffer before lyophilization is Tris/PBS-based buffer, 6% Trehalose, pH 8.0.
Molecular Mass	15.2 kDa
Purity	Greater than 90% as determined by SDS-PAGE.
Storage	Store at -20°C/-80°C upon receipt, aliquoting is necessary for mutiple use. Avoid repeated freeze-thaw cycles.
Reconstitution	We recommend that this vial be briefly centrifuged prior to opening to bring the contents to the bottom. Please reconstitute protein in deionized sterile water to a concentration of 0.1-1.0 mg/mL. We recommend to add 5-50% of glycerol (final

 Tel: 1-631-559-9269 1-516-512-3133

 Email: info@creative-biomart.com  Fax: 1-631-938-8127

 45-1 Ramsey Road, Shirley, NY 11967, USA

concentration) and aliquot for long-term storage at -20°C/-80°C.

AA Sequence

MPSEKTFKQRRTFEQRVEDVRLIREQHPTKIPVIERYKGEKQLPVLDTKFLVPDHV
 NMSELIKIIRRLQLNANQAFFLLVNGHSMVSVSTPISEVYESEKDEDGFLYMVYASQ
 ETFG

GENE INFORMATION

Gene Name

MAP1LC3B microtubule-associated protein 1 light chain 3 beta [Homo sapiens]

Official Symbol

MAP1LC3B

Synonyms

MAP1LC3B; microtubule-associated protein 1 light chain 3 beta; microtubule-associated proteins 1A/1B light chain 3B; ATG8F; MAP1A/MAP1B LC3 B; MAP1A/MAP1B light chain 3 B; MAP1 light chain 3-like protein 2; autophagy-related ubiquitin-like modifier LC3 B; LC3B; MAP1LC3B-a; MAP1A/1BLC3;

Gene ID

81631

mRNA Refseq

NM_022818

Protein Refseq

NP_073729

MIM

609604

UniProt ID

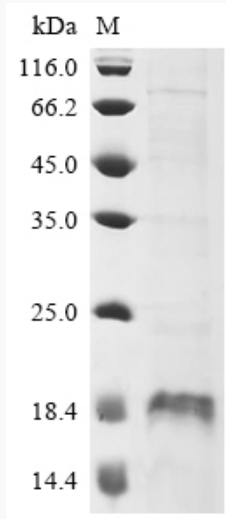
Q9GZQ8

 Tel: 1-631-559-9269 1-516-512-3133

 Email: info@creative-biomart.com  Fax: 1-631-938-8127

 45-1 Ramsey Road, Shirley, NY 11967, USA

SDS-PAGE



 Tel: 1-631-559-9269 1-516-512-3133

 Email: info@creative-biomart.com  Fax: 1-631-938-8127

 45-1 Ramsey Road, Shirley, NY 11967, USA