

Recombinant Full Length Human MAP1LC3B protein, no tag

Cat. No. MAP1LC3B-3617H Lot. No. (See product label)

SPECIFICATION

Product Overview	Recombinant Full Length Human MAP1LC3B protein(Q9GZQ8)(1-125 aa) was expressed in E.coli.
Species	Human
Source	E.coli
ProteinLength	1-125 aa
Form	Lyophilized from a 0.2 µm filtered solution of 20 mM Citrate, 15% Trehalose, 0.05% Tween 80, 2mM DTT, pH4.0.
Molecular Mass	14.8 KDa
Endotoxin	< 1 EU/g as determined by LAL test.
Purity	Greater than 95% as determined by reducing SDS-PAGE.
Storage	Lyophilized protein should be stored at ≤ -20°C, stable for one year after receipt. Reconstituted protein solution can be stored at 2-8°C for 2-7 days. Aliquots of reconstituted samples are stable at ≤ -20°C for 3 months.
Reconstitution	Always centrifuge tubes before opening. Do not mix by vortex or pipetting. It is not recommended to reconstitute to a concentration less than 100µg/ml. Dissolve the lyophilized protein in distilled water. Please aliquot the reconstituted solution to

 Tel: 1-631-559-9269 1-516-512-3133

 Email: info@creative-biomart.com  Fax: 1-631-938-8127

 45-1 Ramsey Road, Shirley, NY 11967, USA

minimize freeze-thaw cycles.

GENE INFORMATION

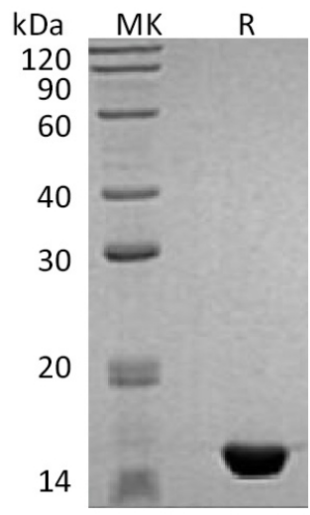
Gene Name	MAP1LC3B microtubule-associated protein 1 light chain 3 beta [Homo sapiens]
Official Symbol	MAP1LC3B
Synonyms	MAP1LC3B; microtubule-associated protein 1 light chain 3 beta; microtubule-associated proteins 1A/1B light chain 3B; ATG8F; MAP1A/MAP1B LC3 B; MAP1A/MAP1B light chain 3 B; MAP1 light chain 3-like protein 2; autophagy-related ubiquitin-like modifier LC3 B; LC3B; MAP1LC3B-a; MAP1A/1BLC3;
Gene ID	81631
mRNA Refseq	NM_022818
Protein Refseq	NP_073729
MIM	609604
UniProt ID	Q9GZQ8

 Tel: 1-631-559-9269 1-516-512-3133

 Email: info@creative-biomart.com  Fax: 1-631-938-8127

 45-1 Ramsey Road, Shirley, NY 11967, USA

SDS-PAGE



 Tel: 1-631-559-9269 1-516-512-3133

 Email: info@creative-biomart.com  Fax: 1-631-938-8127

 45-1 Ramsey Road, Shirley, NY 11967, USA