

Recombinant Human MAP1LC3B protein

Cat. No. MAP1LC3B-7477H Lot. No. (See product label)

SPECIFICATION

Product Overview	Recombinant Human MAP1LC3Bprotein(Q9GZQ8)(125aa) was expressed in E. coli.
Species	Human
Source	E.coli
ProteinLength	125aa
Tag	Non
Form	20mM Tris.Cl, 50mM NaCl, 50% Glycerol, pH8.0.
Molecular Mass	14.7kDa
Storage	Store at -80°C and avoid repeated freeze-thaw cycles.
Reconstitution	It is recommended that sterile water be added to the vial to prepare a stock solution of 0.2 ug/ul. Centrifuge the vial at 4°C before opening to recover the entire contents.

GENE INFORMATION

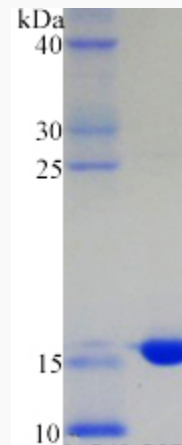
Gene Name	MAP1LC3B microtubule-associated protein 1 light chain 3 beta [Homo sapiens]
Official Symbol	MAP1LC3B

 Tel: 1-631-559-9269 1-516-512-3133

 Email: info@creative-biomart.com  Fax: 1-631-938-8127

 45-1 Ramsey Road, Shirley, NY 11967, USA

Synonyms	MAP1LC3B; microtubule-associated protein 1 light chain 3 beta; microtubule-associated proteins 1A/1B light chain 3B; ATG8F; MAP1A/MAP1B LC3 B; MAP1A/MAP1B light chain 3 B; MAP1 light chain 3-like protein 2; autophagy-related ubiquitin-like modifier LC3 B; LC3B; MAP1LC3B-a; MAP1A/1BLC3;
Gene ID	81631
mRNA Refseq	NM_022818
Protein Refseq	NP_073729
MIM	609604
UniProt ID	Q9GZQ8

SDS-PAGE

 Tel: 1-631-559-9269 1-516-512-3133

 Email: info@creative-biomart.com  Fax: 1-631-938-8127

 45-1 Ramsey Road, Shirley, NY 11967, USA