

Recombinant Human MAP1S Protein (794-1053 aa), His-tagged

Cat. No. MAP1S-1260H Lot. No. (See product label)

SPECIFICATION

Product Overview Recombinant Human MAP1S Protein (794-1053 aa) is produced by E. coli expression system. This protein is fused with a 6xHis tag at the N-terminal. Research Area: Apoptosis. Protein Description: Partial.

Species Human

Source E.coli

ProteinLength 794-1053 aa

Description Microtubule-associated protein that mediates aggregation of mitochondria resulting in cell death and genomic destruction (MAGD). Plays a role in anchoring the microtubule organizing center to the centrosomes. Binds to DNA. Plays a role in apoptosis. Involved in the formation of microtubule bundles.

Form Tris-based buffer,50% glycerol

Molecular Mass 31.7 kDa

AA Sequence
 LSDSDPVPLAPGAADSDEDTEGFGVPRHDPLPDPLKVPPLPDPSSICMVDPEMLP
 PKTARQTENVSRTKPLARPNRAAPKATPVAAAKTKGLAGGDRASRPLSARSEP
 SEKGGRAPLSRKSSTPKTATRGPSGSASSRPGVSATPPKSPVYLDLAYLPSGSSAH
 LVDEEFFQRVRLCYVISGQDQRKEEGMRAVL DALLASKQHWDRDLQVTLIPTFDS
 VAMHTWYAETHARHQALGITVLGSNSMVMQDDAFP

 Tel: 1-631-559-9269 1-516-512-3133

 Email: info@creative-biomart.com  Fax: 1-631-938-8127

 45-1 Ramsey Road, Shirley, NY 11967, USA



Purity	> 90% as determined by SDS-PAGE.
Notes	Repeated freezing and thawing is not recommended. Store working aliquots at 4 centigrade for up to one week.
Storage	The shelf life is related to many factors, storage state, buffer ingredients, storage temperature and the stability of the protein itself. Generally, the shelf life of liquid form is 6 months at -20 centigrade/-80 centigrade. The shelf life of lyophilized form is 12 months at -20 centigrade/-80 centigrade.
Concentration	A hardcopy of COA with reconstitution instruction is sent along with the products. Please refer to it for detailed information.

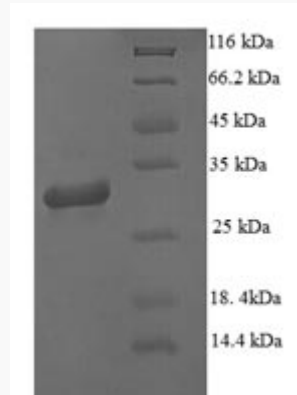
GENE INFORMATION

Gene Name	MAP1S microtubule-associated protein 1S [Homo sapiens]
Official Symbol	MAP1S
Synonyms	MAP1S; FLJ10669; MAP8; MAP-1S; BPY2IP1; C19orf5; VCY2IP1; VCY2IP-1; MGC133087;
Gene ID	55201
mRNA Refseq	NM_018174
Protein Refseq	NP_060644
MIM	607573
UniProt ID	Q66K74

Tel: 1-631-559-9269 1-516-512-3133

Email: info@creative-biomart.com Fax: 1-631-938-8127

45-1 Ramsey Road, Shirley, NY 11967, USA



(Tris-Glycine gel) Discontinuous SDS-PAGE (reduced) with 5% enrichment gel and 15% separation gel.

Tel: 1-631-559-9269 1-516-512-3133

Email: info@creative-biomart.com Fax: 1-631-938-8127

45-1 Ramsey Road, Shirley, NY 11967, USA