

Active Recombinant Human MAP1S Protein, GST-tagged

Cat. No. MAP1S-318H Lot. No. (See product label)

SPECIFICATION

| | |
|-----------------------------|--|
| Product Overview | Human BPY2IP1 partial ORF (NP_060644.4, 929 a.a. - 1026 a.a.) recombinant protein with GST-tag at N-terminal. |
| Species | Human |
| Source | Wheat Germ |
| Form | 50 mM Tris-HCl, 10 mM reduced Glutathione, pH=8.0 in the elution buffer. |
| Bio-activity | 139 pmol/ug x min |
| Molecular Mass | 36.52 kDa |
| AA Sequence | SGSASSRPGVSATPPKSPVYLDLAYLPSGSSAHLVDEEFFQRVRALCYVISGQDQR KEEGMRAVL DALLASKQHWDRDLQVTLIPTFDSVAMHTWYAE |
| Quality Control Test | 12.5% SDS-PAGE Stained with Coomassie Blue. |
| Notes | Best use within three months from the date of receipt of this protein. |
| Storage | Store at -80 centigrade. Aliquot to avoid repeated freezing and thawing. |
| Storage Buffer | 50 mM Tris-HCl, 10 mM reduced Glutathione, pH=8.0 in the elution buffer. |

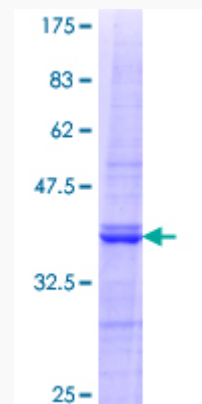
GENE INFORMATION

 Tel: 1-631-559-9269 1-516-512-3133

 Email: info@creative-biomart.com  Fax: 1-631-938-8127

 45-1 Ramsey Road, Shirley, NY 11967, USA

| | |
|------------------------|---|
| Gene Name | MAP1S microtubule-associated protein 1S [Homo sapiens] |
| Official Symbol | MAP1S |
| Synonyms | MAP1S; microtubule-associated protein 1S; BPY2 interacting protein 1 , BPY2IP1, C19orf5, chromosome 19 open reading frame 5 , VCY2 interacting protein 1 , VCY2IP1; FLJ10669; MAP8; MAP-1S; BPY2 interacting protein 1; BPY2-interacting protein 1; VCY2 interacting protein 1; VCY2-interacting protein 1; microtubule-associated protein 8; variable charge Y chromosome 2-interacting protein 1; BPY2IP1; C19orf5; VCY2IP1; VCY2IP-1; MGC133087; |
| Gene ID | 55201 |
| mRNA Refseq | NM_018174 |
| Protein Refseq | NP_060644 |
| MIM | 607573 |
| UniProt ID | Q66K74 |



Tel: 1-631-559-9269 1-516-512-3133

Email: info@creative-biomart.com Fax: 1-631-938-8127

45-1 Ramsey Road, Shirley, NY 11967, USA