

## Recombinant Human MAP2K1 Protein, His-tagged

Cat. No. MAP2K1-1035H Lot. No. (See product label)

### SPECIFICATION

<b>Product Overview</b>	Recombinant Human MAP2K1 Protein(Q02750-1)(M1-V393), fused with N-terminal His tag, was expressed in Sf9 insect cell.
<b>Species</b>	Human
<b>Source</b>	Sf9 Cells
<b>ProteinLength</b>	M1-V393
<b>Tag</b>	N-His
<b>Form</b>	20 mM Hepes, 300 mM NaCl, 1 mM DTT, 0.05% Brij-35, 10% glycerol, pH 7.5.
<b>Bio-activity</b>	The MAP2K1 activity was detected using Ultra Luminescence technology. The reaction was performed by incubating the MAP2K1 protein, ATP and substrate at 25°C for 60 min, then adding ADP-Glo reagent and reading RLU signal with BMG.
<b>Molecular Mass</b>	45.9 kDa
<b>Purity</b>	>95% by SDS-PAGE
<b>Storage</b>	Stable for 12 months upon stored at -80°C from the date of receipt. And avoid repeated freeze-thaws cycles.
<b>Concentration</b>	0.74 mg/mL by OD280

 Tel: 1-631-559-9269 1-516-512-3133

 Email: [info@creative-biomart.com](mailto:info@creative-biomart.com)  Fax: 1-631-938-8127

 45-1 Ramsey Road, Shirley, NY 11967, USA

**Reconstitution** Centrifuge the vial at 4°C before opening to recover the entire contents.

## GENE INFORMATION

**Gene Name** MAP2K1 mitogen-activated protein kinase kinase 1 [ Homo sapiens ]

**Official Symbol** MAP2K1

**Synonyms** MAP2K1; mitogen-activated protein kinase kinase 1; PRKMK1; dual specificity mitogen-activated protein kinase kinase 1; MAPKK1; MEK1; MEK 1; MAPKK 1; MAPK/ERK kinase 1; MAP kinase kinase 1; ERK activator kinase 1; protein kinase, mitogen-activated, kinase 1 (MAP kinase kinase 1); MKK1;

**Gene ID** 5604

**mRNA Refseq** NM\_002755

**Protein Refseq** NP\_002746

**MIM** 176872

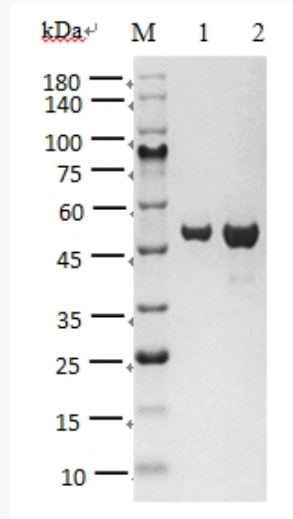
**UniProt ID** Q02750

 Tel: 1-631-559-9269 1-516-512-3133

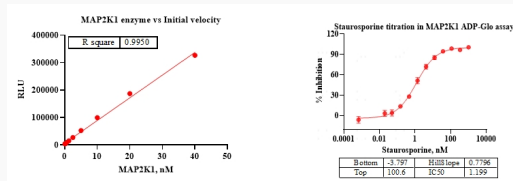
 Email: [info@creative-biomart.com](mailto:info@creative-biomart.com)  Fax: 1-631-938-8127

 45-1 Ramsey Road, Shirley, NY 11967, USA

**SDS-PAGE**



**Activity**



Tel: 1-631-559-9269 1-516-512-3133

Email: [info@creative-biomart.com](mailto:info@creative-biomart.com) Fax: 1-631-938-8127

45-1 Ramsey Road, Shirley, NY 11967, USA