

Active Recombinant Full Length Human MAP2K1 Protein, GST-tagged

Cat. No. MAP2K1-2723HF **Lot. No.** (See product label)

SPECIFICATION

| | |
|-------------------------|--------------------------------------------------------------------------------------------------------------------------------------------------------------------------------------------------------------------------------------------------------------------------------------------------------------------------------------------------------------------------------------------------------|
| Product Overview | Full-length human MAP2K1 [1-393(end) amino acids of accession number NP_002746.1] was co- expressed as N-terminal GST-fusion protein (71 kDa) with human His-tagged RAF1 [306-648(end) amino acids and Y340D and Y341D of accession number NP_002871.1] using baculovirus expression system. GST-MAP2K1 was purified by using glutathione sepharose chromatography and Ni-NTA affinity chromatography. |
| Species | Human |
| Source | Sf21 Cells |
| ProteinLength | 1-393(end) |
| Form | 50 mM Tris-HCl, 150 mM NaCl, 0.05% Brij35, 1 mM DTT, 10% glycerol, pH7.5 |
| Bio-activity | The activity was determined by ELISA. The enzyme was incubated with GST-fused substrate protein, and after stopping kinase reaction by EDTA, the reaction solution was transferred into glutathione- coated plate. Phosphorylation was detected by anti-phospho antibody and HRP-labeled anti-rabbit IgG(or HRP-labeled anti-mouse IgG) . |
| Purity | 90% |
| Applications | SDS-PAGE |

 Tel: 1-631-559-9269 1-516-512-3133

 Email: info@creative-biomart.com  Fax: 1-631-938-8127

 45-1 Ramsey Road, Shirley, NY 11967, USA

Storage Store at -80C. Avoid repeating freeze-thaws.

GENE INFORMATION

Gene Name mitogen-activated protein kinase kinase 1

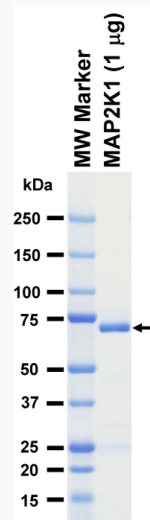
Official Symbol MAP2K1

Synonyms MAP2K1;CFC3;MAPKK1;MEK1;MKK1;PRKMK1

Protein Refseq [NP_002746.1](#)

UniProt ID [Q02750](#)

SDS-PAGE

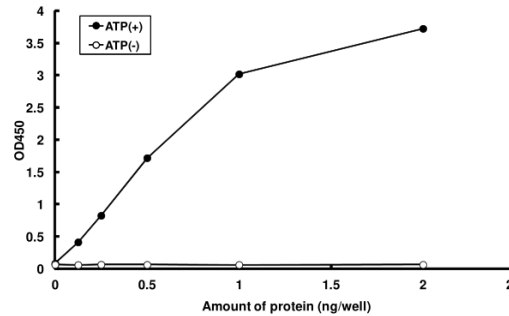


The purity was assessed by SDS-PAGE/CBB staining.

 Tel: 1-631-559-9269 1-516-512-3133

 Email: info@creative-biomart.com  Fax: 1-631-938-8127

 45-1 Ramsey Road, Shirley, NY 11967, USA

Activity data**Activity data**

The activity was determined by ELISA. The enzyme was incubated with GST-fused substrate protein, and after stopping kinase reaction by EDTA, the reaction solution was transferred into glutathione-coated plate. Phosphorylation was detected by anti-phospho antibody and HRP-labeled anti-rabbit IgG (or HRP-labeled anti-mouse IgG).

Tel: 1-631-559-9269 1-516-512-3133

Email: info@creative-biomart.com Fax: 1-631-938-8127

45-1 Ramsey Road, Shirley, NY 11967, USA