

Recombinant Human MAP2K1 Protein (Leu54-Val369), N-His tagged

Cat. No. MAP2K1-5001H Lot. No. (See product label)

SPECIFICATION

Product Overview	Recombinant human MAP2K1 (Leu54-Val369) fused with the N-His tag was expressed in E. coli.
Species	Human
Source	E.coli
ProteinLength	Leu54-Val369
Form	Lyophilized powder/frozen liquid
Molecular Mass	37.45 kDa
Purity	>90% as determined by SDS-PAGE.
Notes	For research use only.
Storage	Use a manual defrost freezer and avoid repeated freeze thaw cycles. Store at 2 to 8 centigrade for one week. Store at -20 to -80 centigrade for twelve months from the date of receipt.
Storage Buffer	0.01M PBS, pH 7.4, 0.02% NLS
Reconstitution	Reconstitute in sterile water for a stock solution.

 Tel: 1-631-559-9269 1-516-512-3133

 Email: info@creative-biomart.com  Fax: 1-631-938-8127

 45-1 Ramsey Road, Shirley, NY 11967, USA

Shipping They are shipped out with dry ice/blue ice unless customers require otherwise.

GENE INFORMATION

Gene Name MAP2K1 mitogen-activated protein kinase kinase 1 [Homo sapiens (human)]

Official Symbol MAP2K1

Synonyms MAP2K1; mitogen-activated protein kinase kinase 1; PRKMK1; dual specificity mitogen-activated protein kinase kinase 1; MAPKK1; MEK1; MEK 1; MAPKK 1; MAPK/ERK kinase 1; MAP kinase kinase 1; ERK activator kinase 1; protein kinase, mitogen-activated, kinase 1 (MAP kinase kinase 1); MKK1;

Gene ID 5604

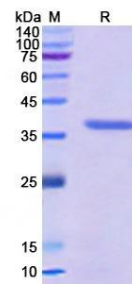
mRNA Refseq NM_002755

Protein Refseq NP_002746

MIM 176872

UniProt ID Q02750

SDS-PAGE



 Tel: 1-631-559-9269 1-516-512-3133

 Email: info@creative-biomart.com  Fax: 1-631-938-8127

 45-1 Ramsey Road, Shirley, NY 11967, USA