

Active Recombinant Full Length Human MAP2K1 Protein, GST-tagged

Cat. No. MAP2K1-8116HF Lot. No. (See product label)

SPECIFICATION

Product Overview	Full-length human MAP2K1 [1-393(end) amino acids of accession number NP_002746.1] was expressed as N-terminal GST-fusion protein (70 kDa) using E.coli expression system. GST-MAP2K1 was purified by using glutathione sepharose chromatography.
Species	Human
Source	E.coli
ProteinLength	1-393(end)
Form	50 mM Tris-HCl, 150 mM NaCl, 0.1% CHAPS, 5 mM DTT, 10% glycerol, pH 7.5
Bio-activity	The activity was determined by ELISA. The enzyme was incubated with GST-fused substrate protein, and after stopping kinase reaction by EDTA, the reaction solution was transferred into glutathione- coated plate. Phosphorylation was detected by anti-phospho antibody and HRP-labeled anti-rabbit IgG.
Purity	56%
Applications	SDS-PAGE
Storage	Store at -80C. Avoid repeating freeze-thaws.

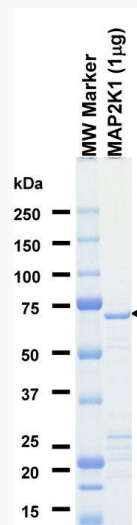
 Tel: 1-631-559-9269 1-516-512-3133

 Email: info@creative-biomart.com  Fax: 1-631-938-8127

 45-1 Ramsey Road, Shirley, NY 11967, USA

GENE INFORMATION

Gene Name	mitogen-activated protein kinase kinase 1
Official Symbol	MAP2K1
Synonyms	MAP2K1;CFC3;MAPKK1;MEK1;MKK1;PRKMK1
Protein Refseq	NP_002746.1
UniProt ID	Q02750

SDS-PAGE

The purity was assessed by SDS-PAGE/CBB staining.

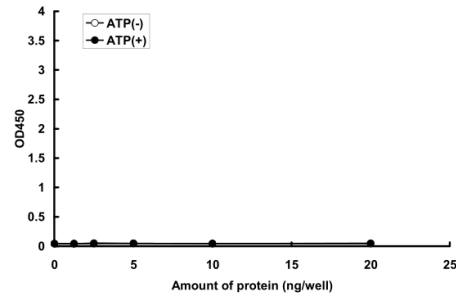
 Tel: 1-631-559-9269 1-516-512-3133

 Email: info@creative-biomart.com  Fax: 1-631-938-8127

 45-1 Ramsey Road, Shirley, NY 11967, USA

Activity data

Activity data



The activity was determined by ELISA. The enzyme was incubated with GST-fused substrate protein, and after stopping kinase reaction by EDTA, the reaction solution was transferred into glutathione-coated plate. Phosphorylation was detected by anti-phospho antibody and HRP-labeled anti-rabbit IgG.

Tel: 1-631-559-9269 1-516-512-3133

Email: info@creative-biomart.com Fax: 1-631-938-8127

45-1 Ramsey Road, Shirley, NY 11967, USA