

# Active Recombinant Human Full Length MAP2K1 Protein, Avi tagged, Biotin Labeled

**Cat. No.** MAP2K1-9956HF    **Lot. No.** (See product label)

## SPECIFICATION

<b>Product Overview</b>	Avi-Biotinylated active Recombinant Full Length Human MAP2K1 Protein without tag was expressed in Insect Cells.
<b>Species</b>	Human
<b>Source</b>	Insect Cells
<b>ProteinLength</b>	1-393 aa
<b>Conjugation/Label</b>	Biotin
<b>Description</b>	The protein encoded by this gene is a member of the dual specificity protein kinase family, which acts as a mitogen-activated protein (MAP) kinase kinase. MAP kinases, also known as extracellular signal-regulated kinases (ERKs), act as an integration point for multiple biochemical signals. This protein kinase lies upstream of MAP kinases and stimulates the enzymatic activity of MAP kinases upon wide variety of extra- and intracellular signals. As an essential component of MAP kinase signal transduction pathway, this kinase is involved in many cellular processes such as proliferation, differentiation, transcription regulation and development.
<b>Form</b>	Sterile PBS, pH7.4
<b>Bio-activity</b>	Measured by its ability to hydrolyze the 5'-phosphate groups from the substrate adenosine-5'-triphosphate (ATP). The orthophosphate product is measured by a

 Tel: 1-631-559-9269    1-516-512-3133

 Email: [info@creative-biomart.com](mailto:info@creative-biomart.com)     Fax: 1-631-938-8127

 45-1 Ramsey Road, Shirley, NY 11967, USA

Malachite Green Phosphate Detection Kit. The specific activity is 6.63 pmol/min/μg, as measured under the described conditions.

<b>Molecular Mass</b>	47 kDa
<b>Purity</b>	>90% by SDS-PAGE
<b>Storage</b>	Store it under sterile conditions at -20 to -80 centigrade. It is recommended that the protein be aliquoted for optimal storage. Avoid repeated freeze-thaw cycles.
<b>Concentration</b>	0.81 mg/mL by BCA
<b>Labelling Efficiency</b>	1.0 by HABA

## GENE INFORMATION

<b>Gene Name</b>	MAP2K1 mitogen-activated protein kinase kinase 1 [ Homo sapiens (human) ]
<b>Official Symbol</b>	MAP2K1
<b>Synonyms</b>	MAP2K1; mitogen-activated protein kinase kinase 1; PRKMK1; dual specificity mitogen-activated protein kinase kinase 1; MAPKK1; MEK1; MEK 1; MAPKK 1; MAPK/ERK kinase 1; MAP kinase kinase 1; ERK activator kinase 1; protein kinase, mitogen-activated, kinase 1 (MAP kinase kinase 1); MKK1
<b>Gene ID</b>	5604
<b>mRNA Refseq</b>	NM_002755
<b>Protein Refseq</b>	NP_002746

 Tel: 1-631-559-9269 1-516-512-3133

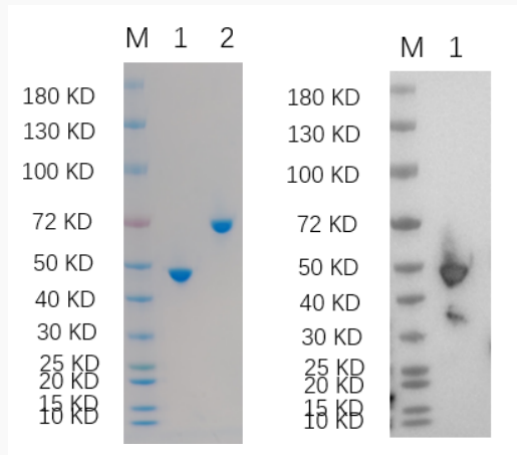
 Email: [info@creative-biomart.com](mailto:info@creative-biomart.com)  Fax: 1-631-938-8127

 45-1 Ramsey Road, Shirley, NY 11967, USA

**MIM** 176872

**UniProt ID** Q02750

**SDS-PAGE and WB**



Reducing 4%-20% SDS-PAGE (CBB stained) and WB (Anti-His Mouse Monoclonal Antibody) analysis profiles of purified MAP2K1. 1. MAP2K1: 1  $\mu$ g 2. BSA: 1  $\mu$ g

 Tel: 1-631-559-9269 1-516-512-3133

 Email: [info@creative-biomart.com](mailto:info@creative-biomart.com)  Fax: 1-631-938-8127

 45-1 Ramsey Road, Shirley, NY 11967, USA