

# Recombinant Full Length Human MAP2K2 Protein, C-Flag-tagged

**Cat. No.** MAP2K2-1645HFL    **Lot. No.** (See product label)

## SPECIFICATION

<b>Product Overview</b>	Recombinant Full Length Human MAP2K2 Protein, fused to Flag-tag at C-terminus, was expressed in Mammalian cells.
<b>Species</b>	Human
<b>Source</b>	Mammalian Cells
<b>Description</b>	The protein encoded by this gene is a dual specificity protein kinase that belongs to the MAP kinase kinase family. This kinase is known to play a critical role in mitogen growth factor signal transduction. It phosphorylates and thus activates MAPK1/ERK2 and MAPK2/ERK3. The activation of this kinase itself is dependent on the Ser/Thr phosphorylation by MAP kinase kinase kinases. Mutations in this gene cause cardiofaciocutaneous syndrome (CFC syndrome), a disease characterized by heart defects, cognitive disability, and distinctive facial features similar to those found in Noonan syndrome. The inhibition or degradation of this kinase is also found to be involved in the pathogenesis of Yersinia and anthrax. A pseudogene, which is located on chromosome 7, has been identified for this gene.
<b>Form</b>	25 mM Tris HCl, pH 7.3, 100 mM glycine, 10% glycerol.
<b>Molecular Mass</b>	44.2 kDa
<b>AA Sequence</b>	MLARRKPVLPALTINPTIAEGPSPTSEGASEANLVDLQKKLEELDEQQKRRLEAFL TQKAKVGELKDD DFERISELGAGNGGVVTKVQHRPSGLIMARKLIHLEIKPAIRNQIIR

 Tel: 1-631-559-9269    1-516-512-3133

 Email: [info@creative-biomart.com](mailto:info@creative-biomart.com)     Fax: 1-631-938-8127

 45-1 Ramsey Road, Shirley, NY 11967, USA

ELQVLHECNSPYIVGFYGFYSD GEISICMEHMDGGSLDQVLKEAKRIPEEILGKVSI  
 AVLRGLAYLREKHQIMHRDVKPSNILVNSRGEIKL CDFGVSGQLIDSMANSFVGTRS  
 YMAPERLQGTHYSVQSDIWSMGLSLVELAVGRYPIPPPPDAKELEAIFG RPVVDGEE  
 GEPHSISPRPRPPGRPVS GHGMDSRPAMAIFELLDYIVNEPPPKL PNGVFTPDFQEF  
 VNKCL  
 IKNPAERADLKMLTNHTFIKRSEVEEVD FAGWLCKTLRLNQP GTPTRTAVTRTRPLE  
 QKLISEEDLAANDILDYKDDDDKV

**Purity** > 80% as determined by SDS-PAGE and Coomassie blue staining.

**Stability** Stable for 12 months from the date of receipt of the product under proper storage and handling conditions. Avoid repeated freeze-thaw cycles.

**Storage** Store at -80 centigrade.

**Concentration** >50 ug/mL as determined by microplate BCA method.

**Preparation** Recombinant protein was captured through anti-DDK affinity column followed by conventional chromatography steps.

**Protein Families** Druggable Genome, Protein Kinase

**Protein Pathways** Acute myeloid leukemia, B cell receptor signaling pathway, Bladder cancer, Chronic myeloid leukemia, Endometrial cancer, ErbB signaling pathway, Fc epsilon RI signaling pathway, Gap junction, Glioma, GnRH signaling pathway, Insulin signaling pathway, Long-term depression, Long-term potentiation, MAPK signaling pathway, Melanogenesis, Melanoma, Natural killer cell mediated cytotoxicity, Neurotrophin signaling pathway, Non-small cell lung cancer, Pathways in cancer, Prion diseases, Prostate cancer, Regulation of actin cytoskeleton, Renal cell carcinoma, T cell receptor signaling pathway, Thyroid cancer, Toll-like receptor signaling pathway,

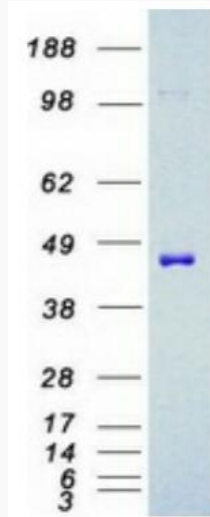
 Tel: 1-631-559-9269 1-516-512-3133

 Email: [info@creative-biomart.com](mailto:info@creative-biomart.com)  Fax: 1-631-938-8127

 45-1 Ramsey Road, Shirley, NY 11967, USA

Vascular smooth muscle contraction, VEGF signaling pathway

**Full Length** Full L.**GENE INFORMATION****Gene Name** MAP2K2 mitogen-activated protein kinase kinase 2 [ Homo sapiens (human) ]**Official Symbol** MAP2K2**Synonyms** CFC4; MEK2; MKK2; MAPKK2; PRKMK2**Gene ID** 5605**mRNA Refseq** NM\_030662.4**Protein Refseq** NP\_109587.1**MIM** 601263**UniProt ID** P36507 Tel: 1-631-559-9269 1-516-512-3133 Email: [info@creative-biomart.com](mailto:info@creative-biomart.com)  Fax: 1-631-938-8127 45-1 Ramsey Road, Shirley, NY 11967, USA



Coomassie blue staining of purified MAP2K2 protein.

 Tel: 1-631-559-9269 1-516-512-3133

 Email: [info@creative-biomart.com](mailto:info@creative-biomart.com)  Fax: 1-631-938-8127

 45-1 Ramsey Road, Shirley, NY 11967, USA