

# Recombinant Human MAP2K2 Protein, Myc/DDK-tagged, C13 and N15-labeled

**Cat. No.** MAP2K2-4024H    **Lot. No.** (See product label)

## SPECIFICATION

|                         |   |
|-------------------------|---|
| <b>Product Overview</b> | MAP2K2 MS Standard C13 and N15-labeled recombinant protein (NP_109587) with a C-terminal MYC/DDK tag, was expressed in HEK293 cells.  |
| <b>Species</b>          | Human   |
| <b>Source</b>           | HEK293  |
| <b>Description</b>      | The protein encoded by this gene is a dual specificity protein kinase that belongs to the MAP kinase kinase family. This kinase is known to play a critical role in mitogen growth factor signal transduction. It phosphorylates and thus activates MAPK1/ERK2 and MAPK2/ERK3. The activation of this kinase itself is dependent on the Ser/Thr phosphorylation by MAP kinase kinase kinases. Mutations in this gene cause cardiofaciocutaneous syndrome (CFC syndrome), a disease characterized by heart defects, cognitive disability, and distinctive facial features similar to those found in Noonan syndrome. The inhibition or degradation of this kinase is also found to be involved in the pathogenesis of Yersinia and anthrax. A pseudogene, which is located on chromosome 7, has been identified for this gene. |
| <b>Molecular Mass</b>   | 44.2 kDa  |
| <b>AA Sequence</b>      | MLARRKPVLPALTINPTIAEGPSPTSEGASEANLVDLQKKLEELDEQQKKRLEAFL<br>TQKAKVGELKDDDFERISELGAGNGGVVTKVQHRPSGLIMARKLIHLEIKPAIRNQIIR<br>ELQVLHECNSPYIVGFYGFYSDGEISICMEHMDGGSLDQVLKEAKRIPEEILGKVSI  |

 Tel: 1-631-559-9269    1-516-512-3133

 Email: [info@creative-biomart.com](mailto:info@creative-biomart.com)     Fax: 1-631-938-8127

 45-1 Ramsey Road, Shirley, NY 11967, USA

AVLRGLAYLREKHQIMHRDVKPSNILVNSRGEIKLCDFGVSGQLIDSMANSFVGTRS  
 YMAPERLQGTHYSVQSDIWSMGLSLVELAVGRYPIPPPDAKELEAIFGRPVDGEE  
 GEPHSISPRPRPPGRPVS GHGMDSRPAMAIFELLDYIVNEPPPKL PNGVFTPDFQEF  
 VNKCLIKNPAERADLKMLTNHTFIKRSEVEEVDVFAGWLCKTLRLNQP GTPTRTAVTR  
 TRPLEQKLISEEDLAANDILDYKDDDDKV

**Purity** > 80% as determined by SDS-PAGE and Coomassie blue staining

**Stability** Stable for 3 months from receipt of products under proper storage and handling conditions.

**Storage** Store at -80 centigrade. Avoid repeated freeze-thaw cycles.

**Concentration** 50 µg/mL as determined by BCA

**Storage Buffer** 100 mM glycine, 25 mM Tris-HCl, pH 7.3.

## GENE INFORMATION

**Gene Name** [MAP2K2 mitogen-activated protein kinase kinase 2 \[ Homo sapiens \(human\) \]](#)

**Official Symbol** [MAP2K2](#)

**Synonyms** MAP2K2; mitogen-activated protein kinase kinase 2; PRKMK2; dual specificity mitogen-activated protein kinase kinase 2; MEK2; MAPK/ERK kinase 2; MAP kinase kinase 2; ERK activator kinase 2; mitogen-activated protein kinase kinase 2, p45; MKK2; MAPKK2; FLJ26075;

**Gene ID** [5605](#)

**mRNA Refseq** [NM\\_030662](#)

 Tel: 1-631-559-9269 1-516-512-3133

 Email: [info@creative-biomart.com](mailto:info@creative-biomart.com)  Fax: 1-631-938-8127

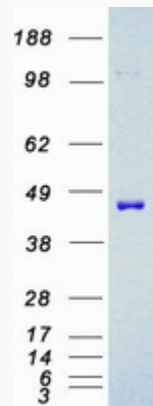
 45-1 Ramsey Road, Shirley, NY 11967, USA

Protein Refseq NP\_109587

MIM 601263

UniProt ID P36507

SDS-PAGE



Tel: 1-631-559-9269 1-516-512-3133

Email: [info@creative-biomart.com](mailto:info@creative-biomart.com) Fax: 1-631-938-8127

45-1 Ramsey Road, Shirley, NY 11967, USA