

Active Recombinant Full Length Human MAP2K2 Protein, GST-tagged

Cat. No. MAP2K2-5651HF Lot. No. (See product label)

SPECIFICATION

Product Overview	Full-length human MAP2K2 [1-400(end) amino acids of accession number NP_109587.1] was co- expressed as N-terminal GST-fusion protein (71 kDa) with human His-tagged RAF1 [306-648(end) amino acids and Y340D and Y341D of accession number NP_002871.1] using baculovirus expression system. GST-MAP2K2 was purified by using glutathione sepharose chromatography and Ni-NTA affinity chromatography.
Species	Human
Source	Sf21 Cells
ProteinLength	1-400
Form	50 mM Tris-HCl, 150 mM NaCl, 0.05% Brij35, 1 mM DTT, 10% glycerol, pH7.5
Bio-activity	The activity was determined by ELISA. The enzyme was incubated with GST-fused substrate protein, and after stopping kinase reaction by EDTA, the reaction solution was transferred into glutathione- coated plate. Phosphorylation was detected by anti-phospho antibody and HRP-labeled anti-rabbit IgG(or HRP-labeled anti-mouse IgG) .
Purity	96%
Applications	SDS-PAGE

 Tel: 1-631-559-9269 1-516-512-3133

 Email: info@creative-biomart.com  Fax: 1-631-938-8127

 45-1 Ramsey Road, Shirley, NY 11967, USA

Storage Store at -80C. Avoid repeating freeze-thaws.

GENE INFORMATION

Gene Name mitogen-activated protein kinase kinase 2

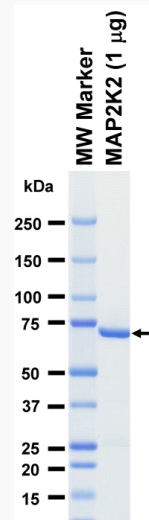
Official Symbol MAP2K2

Synonyms MAP2K2;CFC4;MAPKK2;MEK2;MKK2;PRKMK2

Protein Refseq [NP_109587.1](#)

UniProt ID [P36507](#)

SDS-PAGE

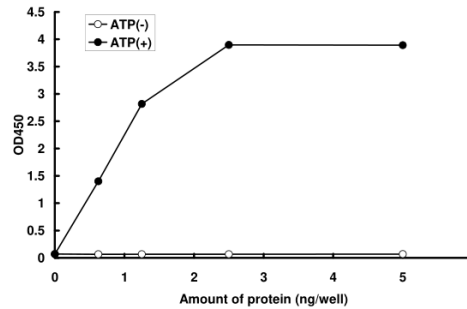


The purity was assessed by SDS-PAGE/CBB staining.

 Tel: 1-631-559-9269 1-516-512-3133

 Email: info@creative-biomart.com  Fax: 1-631-938-8127

 45-1 Ramsey Road, Shirley, NY 11967, USA

Activity data

Activity data

The activity was determined by ELISA. The enzyme was incubated with GST-fused substrate protein, and after stopping kinase reaction by EDTA, the reaction solution was transferred into glutathione-coated plate. Phosphorylation was detected by anti-phospho antibody and HRP-labeled anti-rabbit IgG (or HRP-labeled anti-mouse IgG).

 Tel: 1-631-559-9269 1-516-512-3133

 Email: info@creative-biomart.com  Fax: 1-631-938-8127

 45-1 Ramsey Road, Shirley, NY 11967, USA