

Recombinant Human MAP2K3 Protein, Myc/DDK-tagged, C13 and N15-labeled

Cat. No. MAP2K3-2270H **Lot. No.** (See product label)

SPECIFICATION

Product Overview

MAP2K3 MS Standard C13 and N15-labeled recombinant protein (NP_002747) with a C-terminal MYC/DDK tag, was expressed in HEK293 cells.

Species

Human

Source

HEK293

Description

The protein encoded by this gene is a dual specificity protein kinase that belongs to the MAP kinase kinase family. This kinase is activated by mitogenic and environmental stress, and participates in the MAP kinase-mediated signaling cascade. It phosphorylates and thus activates MAPK14/p38-MAPK. This kinase can be activated by insulin, and is necessary for the expression of glucose transporter. Expression of RAS oncogene is found to result in the accumulation of the active form of this kinase, which thus leads to the constitutive activation of MAPK14, and confers oncogenic transformation of primary cells. The inhibition of this kinase is involved in the pathogenesis of Yersina pseudotuberculosis. Multiple alternatively spliced transcript variants that encode distinct isoforms have been reported for this gene.

Molecular Mass

36.6 kDa

AA Sequence

MSKPPAPNPTPPRNLDSTRFITIGDRNFEVEADDLVTISELGRGAYGVVEKVRHAQS
GTIMAVKRIRATVNSQEQKRLMLDLDINMRTVDCFYTVTFYGALFREGDVWICMELM
DTSLDKFYRKVLDKNMTIPEDILGEIAVSIVRALEHLHSLKLSVIHRDVKPSNVLINKEGH

 Tel: 1-631-559-9269 1-516-512-3133

 Email: info@creative-biomart.com  Fax: 1-631-938-8127

 45-1 Ramsey Road, Shirley, NY 11967, USA

VKMCDFGISGYLVDSVAKTMDAGCKPYMAPERINPELNQKGYNVKSDVWSLGITMI
 EMAILRFPYESWGTPFQQLKQVVEEPSQLPADRFSPDFVDFTAQCLRKNPAERMS
 YLELMEHPFFTLHKTKKTDIAAFVKEILGEDSTRTRPLEQKLISEEDLAANDILDYKDD
 DDKV

Purity > 80% as determined by SDS-PAGE and Coomassie blue staining

Stability Stable for 3 months from receipt of products under proper storage and handling conditions.

Storage Store at -80 centigrade. Avoid repeated freeze-thaw cycles.

Concentration 50 µg/mL as determined by BCA

Storage Buffer 100 mM glycine, 25 mM Tris-HCl, pH 7.3.

GENE INFORMATION

Gene Name [MAP2K3 mitogen-activated protein kinase kinase 3 \[Homo sapiens \(human\) \]](#)

Official Symbol [MAP2K3](#)

Synonyms MAP2K3; mitogen-activated protein kinase kinase 3; PRKMK3; dual specificity mitogen-activated protein kinase kinase 3; dual specificity mitogen activated protein kinase kinase 3; MAP kinase kinase 3; MAPK/ERK kinase 3; MAPKK3; MEK3; MKK3; MEK 3; MAPKK 3; SAPK kinase 2; stress-activated protein kinase kinase 2; SAPKK2; SAPKK-2;

Gene ID [5606](#)

mRNA Refseq [NM_002756](#)

 Tel: 1-631-559-9269 1-516-512-3133

 Email: info@creative-biomart.com  Fax: 1-631-938-8127

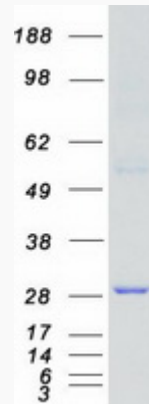
 45-1 Ramsey Road, Shirley, NY 11967, USA

Protein Refseq NP_002747

MIM 602315

UniProt ID P46734

SDS-PAGE



 Tel: 1-631-559-9269 1-516-512-3133

 Email: info@creative-biomart.com  Fax: 1-631-938-8127

 45-1 Ramsey Road, Shirley, NY 11967, USA