

Active Recombinant Full Length Human MAP2K3 Protein, GST-tagged

Cat. No. MAP2K3-8612HF **Lot. No.** (See product label)

SPECIFICATION

Product Overview	Full-length human MAP2K3 [1-347(end) amino acids of accession number NP_659731.1] was co- expressed as N-terminal GST-fusion protein (67 kDa) with human His-tagged MLK3 [99-398 amino acids of accession number NP_002410.1] using baculovirus expression system. GST-MAP2K3 was purified by using glutathione sepharose chromatography.
Species	Human
Source	Sf21 Cells
ProteinLength	1-347
Form	50 mM Tris-HCl, 150 mM NaCl, 0.05% Brij35, 1 mM DTT, 10% glycerol, pH7.5
Bio-activity	The activity was determined by ELISA. The enzyme was incubated with GST-fused substrate protein, and after stopping kinase reaction by EDTA, the reaction solution was transferred into glutathione- coated plate. Phosphorylation was detected by anti-phospho antibody and HRP-labeled anti-rabbit IgG(or HRP-labeled anti-mouse IgG) .
Purity	84%
Applications	SDS-PAGE
Storage	Store at -80C. Avoid repeating freeze-thaws.

 Tel: 1-631-559-9269 1-516-512-3133

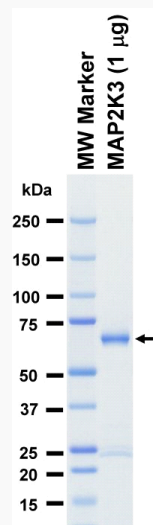
 Email: info@creative-biomart.com  Fax: 1-631-938-8127

 45-1 Ramsey Road, Shirley, NY 11967, USA

GENE INFORMATION

Gene Name	mitogen-activated protein kinase kinase 3
Official Symbol	MAP2K3
Synonyms	MAP2K3;MAPKK3;MEK3;MKK3;PRKMK3;SAPKK-2;SAPKK2
Protein Refseq	NP_659731.1
UniProt ID	P46734

SDS-PAGE



The purity was assessed by SDS-PAGE/CBB staining.

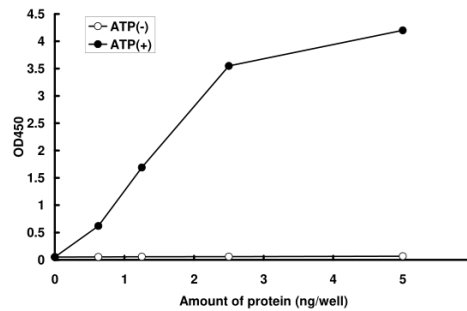
 Tel: 1-631-559-9269 1-516-512-3133

 Email: info@creative-biomart.com  Fax: 1-631-938-8127

 45-1 Ramsey Road, Shirley, NY 11967, USA

Activity data

Activity data



The activity was determined by ELISA. The enzyme was incubated with GST-fused substrate protein, and after stopping kinase reaction by EDTA, the reaction solution was transferred into glutathione- coated plate. Phosphorylation was detected by anti-phospho antibody and HRP-labeled anti-rabbit IgG(or HRP-labeled anti-mouse IgG) .

 Tel: 1-631-559-9269 1-516-512-3133

 Email: info@creative-biomart.com  Fax: 1-631-938-8127

 45-1 Ramsey Road, Shirley, NY 11967, USA