

# Recombinant Full Length Human MAP2K4 Protein, C-Flag-tagged

**Cat. No.** MAP2K4-1091HFL    **Lot. No.** (See product label)

## SPECIFICATION

<b>Product Overview</b>	Recombinant Full Length Human MAP2K4 Protein, fused to Flag-tag at C-terminus, was expressed in Mammalian cells.
<b>Species</b>	Human
<b>Source</b>	Mammalian Cells
<b>Description</b>	This gene encodes a member of the mitogen-activated protein kinase (MAPK) family. Members of this family act as an integration point for multiple biochemical signals and are involved in a wide variety of cellular processes such as proliferation, differentiation, transcription regulation, and development. They form a three-tiered signaling module composed of MAPKKKs, MAPKKs, and MAPKs. This protein is phosphorylated at serine and threonine residues by MAPKKKs and subsequently phosphorylates downstream MAPK targets at threonine and tyrosine residues. A similar protein in mouse has been reported to play a role in liver organogenesis. A pseudogene of this gene is located on the long arm of chromosome X. Alternative splicing results in multiple transcript variants.
<b>Form</b>	25 mM Tris HCl, pH 7.3, 100 mM glycine, 10% glycerol.
<b>Molecular Mass</b>	44.1 kDa
<b>AA Sequence</b>	MAAPSPSGGGGSGGGRGSGTGPVGPAPGHPAVSSMQGKRKALKLNLFANPPFK STARFTLNPNPTGVQN PHIERLRTHSIESSGKLIKISPEQHWDFTAEDLKDLDGEIGRG

 Tel: 1-631-559-9269    1-516-512-3133

 Email: [info@creative-biomart.com](mailto:info@creative-biomart.com)     Fax: 1-631-938-8127

 45-1 Ramsey Road, Shirley, NY 11967, USA

AYGSVNKMVHKPSGQIMAVKRIRSTVDEK EQKQLLMDLDVVMRSSDCPYIVQFYGA  
 LFREGDCWICMELMSTSFDFKYKYVYVSLDDVIPEEILGKITL ATVKALNHLKENLKII  
 HRDIKPSNILLDRSGNIKLCDFGISGQLVDSIAKTRDAGCRPYMAPERIDPSAS RQGY  
 DVRSDVWSLGITLYELATGRFPYPKWNSVFDQLTQVVKGDPPLSNSEEREFSPSFI  
 NFVNLCLTK  
 DESKRPKYKELLKHPFILMYEERAVEVACYVCKILDQMPATPSSPMYVDTRTRPLEQ  
 KLISEEDLAANDILDYKDDDDKV

**Purity** > 80% as determined by SDS-PAGE and Coomassie blue staining.

**Stability** Stable for 12 months from the date of receipt of the product under proper storage and handling conditions. Avoid repeated freeze-thaw cycles.

**Storage** Store at -80 centigrade.

**Concentration** >50 ug/mL as determined by microplate BCA method.

**Preparation** Recombinant protein was captured through anti-DDK affinity column followed by conventional chromatography steps.

**Protein Families** Druggable Genome, Protein Kinase

**Protein Pathways** Epithelial cell signaling in Helicobacter pylori infection, ErbB signaling pathway, Fc epsilon RI signaling pathway, GnRH signaling pathway, MAPK signaling pathway, Toll-like receptor signaling pathway

**Full Length** Full L.

## GENE INFORMATION

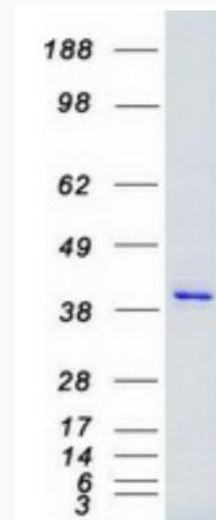
**Gene Name** MAP2K4 mitogen-activated protein kinase kinase 4 [ Homo sapiens (human) ]

 Tel: 1-631-559-9269 1-516-512-3133

 Email: [info@creative-biomart.com](mailto:info@creative-biomart.com)  Fax: 1-631-938-8127

 45-1 Ramsey Road, Shirley, NY 11967, USA

<b>Official Symbol</b>	MAP2K4
<b>Synonyms</b>	JNKK; MEK4; MKK4; SEK1; SKK1; JNKK1; SERK1; MAPKK4; PRKMK4; SAPKK1; SAPKK-1
<b>Gene ID</b>	6416
<b>mRNA Refseq</b>	NM_003010.4
<b>Protein Refseq</b>	NP_003001.1
<b>MIM</b>	601335
<b>UniProt ID</b>	P45985



Coomassie blue staining of purified MAP2K4 protein.

 Tel: 1-631-559-9269 1-516-512-3133

 Email: [info@creative-biomart.com](mailto:info@creative-biomart.com)  Fax: 1-631-938-8127

 45-1 Ramsey Road, Shirley, NY 11967, USA