

Active Recombinant Full Length Human MAP2K4 Protein, GST-tagged

Cat. No. MAP2K4-5287HF **Lot. No.** (See product label)

SPECIFICATION

Product Overview Full-length human MAP2K4 [1-399(end) amino acids of accession number NP_003001.1] was co- expressed as N-terminal GST-fusion protein (71 kDa) with human His-tagged MAP3K3 [1-626(end) amino acids of accession number NP_002392.2] using baculovirus expression system. GST-MAP2K4 was purified by using glutathione sepharose chromatography.

Species Human

Source Sf21 Cells

ProteinLength 1-399

Form 50 mM Tris-HCl, 150 mM NaCl, 0.05% Brij35, 1 mM DTT, 10% glycerol, pH7.5

Bio-activity The activity was determined by ELISA. The enzyme was incubated with GST-fused substrate protein, and after stopping kinase reaction by EDTA, the reaction solution was transferred into glutathione-coated plate. Phosphorylation was detected by anti-phospho antibody and HRP-labeled anti-rabbit IgG(or HRP-labeled anti-mouse IgG) .

Purity 66%

Applications SDS-PAGE

Storage Store at -80C. Avoid repeating freeze-thaws.

 Tel: 1-631-559-9269 1-516-512-3133

 Email: info@creative-biomart.com  Fax: 1-631-938-8127

 45-1 Ramsey Road, Shirley, NY 11967, USA

GENE INFORMATION

Gene Name mitogen-activated protein kinase kinase 4

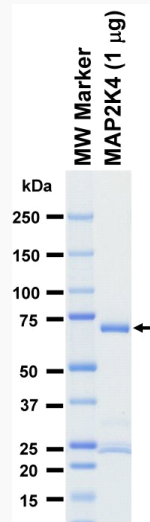
Official Symbol MAP2K4

Synonyms MAP2K4;JNKK;JNKK1;MAPKK4;MEK4;MKK4;PRKMK4;SAPKK-1;SAPKK1;SEK1;SERK1;SKK1

Protein Refseq [NP_003001.1](#)

UniProt ID [P45985](#)

SDS-PAGE



The purity was assessed by SDS-PAGE/CBB staining.

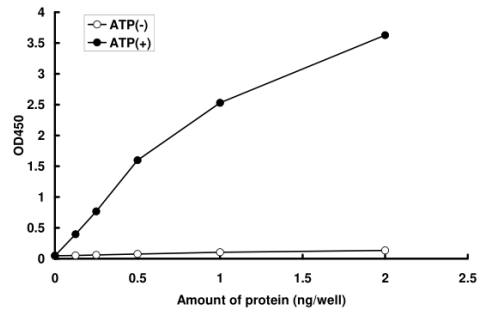
 Tel: 1-631-559-9269 1-516-512-3133

 Email: info@creative-biomart.com  Fax: 1-631-938-8127

 45-1 Ramsey Road, Shirley, NY 11967, USA

Activity data

Activity data



The activity was determined by ELISA. The enzyme was incubated with GST-fused substrate protein, and after stopping kinase reaction by EDTA, the reaction solution was transferred into glutathione-coated plate. Phosphorylation was detected by anti-phospho antibody and HRP-labeled anti-rabbit IgG (or HRP-labeled anti-mouse IgG)

 Tel: 1-631-559-9269 1-516-512-3133

 Email: info@creative-biomart.com  Fax: 1-631-938-8127

 45-1 Ramsey Road, Shirley, NY 11967, USA