

# Active Recombinant Full Length Human MAP2K5 Protein, GST-tagged

**Cat. No.** MAP2K5-2401HF    **Lot. No.** (See product label)

## SPECIFICATION

<b>Product Overview</b>	Full-length human MAP2K5 [1-448(end) amino acids of accession number NP_660143.1] was co- expressed as N-terminal GST-fusion protein (77 kDa) with human His-tagged MAP3K3[1-626(end) amino acids of accession number NP_002392.2], CDC37 and HSP90 using baculovirus expression system. GST-MAP2K5 was purified by using glutathione sepharose chromatography.
<b>Species</b>	Human
<b>Source</b>	Sf21 Cells
<b>ProteinLength</b>	1-448
<b>Form</b>	50 mM Tris-HCl, 150 mM NaCl, 0.05% Brij35, 1 mM DTT, 10% glycerol, pH7.5
<b>Bio-activity</b>	The activity was determined by ELISA. The enzyme was incubated with GST-fused substrate protein, and after stopping kinase reaction by EDTA, the reaction solution was transferred into glutathione- coated plate. Phosphorylation was detected by anti-phospho antibody and HRP-labeled anti-rabbit IgG(or HRP-labeled anti-mouse IgG) .
<b>Purity</b>	51%
<b>Applications</b>	SDS-PAGE
<b>Storage</b>	Store at -80C. Avoid repeating freeze-thaws.

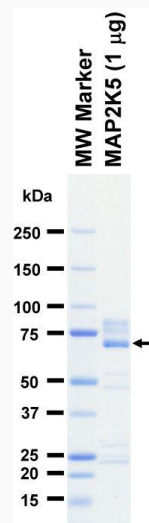
 Tel: 1-631-559-9269    1-516-512-3133

 Email: [info@creative-biomart.com](mailto:info@creative-biomart.com)     Fax: 1-631-938-8127

 45-1 Ramsey Road, Shirley, NY 11967, USA

**GENE INFORMATION**

<b>Gene Name</b>	mitogen-activated protein kinase kinase 5
<b>Official Symbol</b>	MAP2K5
<b>Synonyms</b>	MAP2K5;HsT17454;MAPKK5;MEK5;PRKMK5
<b>Protein Refseq</b>	<a href="#">NP_660143.1</a>
<b>UniProt ID</b>	<a href="#">Q13163</a>

**SDS-PAGE**

The purity was assessed by SDS-PAGE/CBB staining.

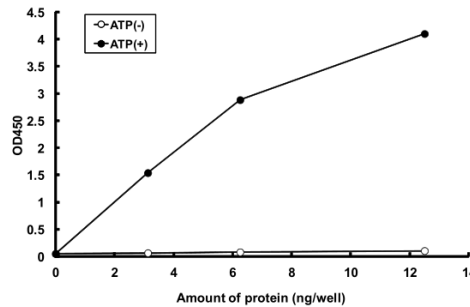
 Tel: 1-631-559-9269 1-516-512-3133

 Email: [info@creative-biomart.com](mailto:info@creative-biomart.com)  Fax: 1-631-938-8127

 45-1 Ramsey Road, Shirley, NY 11967, USA

### Activity data

Activity data



The activity was determined by ELISA. The enzyme was incubated with GST-fused substrate protein, and after stopping kinase reaction by EDTA, the reaction solution was transferred into glutathione-coated plate. Phosphorylation was detected by anti-phospho antibody and HRP-labeled anti-rabbit IgG (or HRP-labeled anti-mouse IgG).

Tel: 1-631-559-9269 1-516-512-3133

Email: [info@creative-biomart.com](mailto:info@creative-biomart.com) Fax: 1-631-938-8127

45-1 Ramsey Road, Shirley, NY 11967, USA